

Consumer Group Snapshot

Families and Individuals Experiencing Violence/Abuse

Consumer Category:
Family Issues



February 2007

Consumer Group Snapshot

CONSUMER GROUP: Families & individuals experiencing violence/abuse

DEFINITIONS

Knapp (1998) defines family violence as the intentional intimidation or abuse of children, adults, or elders by a family member, intimate partner, or caretaker to gain power and control over the victim.¹ Abuse has many forms, including physical and sexual assault, emotional or psychological mistreatment, threats and intimidation, economic abuse, and violation of individual rights.

De Benedictis et al. (2004) define child abuse as any act or failure to act that endangers a child's physical or emotional health and development.² A person caring for a child is abusive if he or she fails to nurture the child, physically injures the child, or relates sexually to the child. The four major types of child abuse are: 1) physical abuse; 2) sexual abuse; 3) emotional abuse; and 4) neglect. Another type of abuse is child exploitation (distinct from sexual exploitation). This is the use of a child in work or other activities for the benefit of others. Child labor is an example of child exploitation for commercial reasons. Using a child in this way detracts from their own physical, mental, and social development.

According to the Ohio Elder Abuse Task Force Report (January 2005),³ “elder abuse represents any act that causes harm or creates a risk of harm to a vulnerable older person by someone in a relationship of trust to that person. It also is the failure of a caregiver to provide for the basic needs of an older person or to protect the older person from harm. Finally, in Ohio and many other states, elder abuse includes the failure of the older person to provide such basic needs for him- or herself because of impairment or other limitations, such as poverty. As evident in these definitions, elder abuse takes many different forms. They range from physical, psychological, sexual, and financial abuse to neglect and self-neglect. Their consequences for victims can be grave, including injury, pain, mental anguish, financial loss, violation of rights, and even death. Indeed, research on the mortality of elder abuse suggests that victims are more than three times more likely to die within three years than non-victims.

THE CONSUMERS

See Attachment 1: Family of Services & Attachment 2: Consumer Matrix

Stage One: At Risk (Estimated Number/ Percent County Population)

According to the Office on Child Abuse and Neglect in the U.S. Department of Health and Human Services, “not everyone is equally at risk of being involved in violence either as a perpetrator or as a victim. The risk of involvement in some types of violence differs markedly by gender (men are more often victims and perpetrators of homicide, while women are more commonly the victims of intimate partner and sexual violence); and by age (rates of severe

Consumer Group Snapshot

CONSUMER GROUP: Families & individuals experiencing violence/abuse

physical violence rise sharply at age 15 and remain high to age 44). In addition, environmental and community characteristics (such as high unemployment rates) influence levels of violence, and countries with higher levels of income inequality also tend to experience higher levels of homicide.”⁴

Stage Two: In Crisis (Estimated Number/ Percent County Population)

Overall Family Violence

Total Families in Cuyahoga County per American Community Survey (2005): 333,211
Estimated 83,303 families in Cuyahoga County, 25 percent of all families.⁵

Child Abuse

On average, each month Cuyahoga County has 800 children in protective supervision; 1,200 children in emergency custody; 2,000 children in temporary custody; 1,500 children in permanent custody; and 500 children in long-term foster care (Cuyahoga County Department of Children and Family Services 2005).⁶ This is a total of 4,500 children involved with the county’s child welfare system, 1 percent of all children under age 18 years: 321,492 per the American Community Survey 2005.

There were 3,607 substantiated incidents of child abuse in Cuyahoga County in 2005. Neighborhoods with the highest rates of substantiated incidents were Industrial Valley (10 children or a rate of 72.99 per 1,000 children), Goodrich-Kirtland Park (42 children or a rate 46.23), Downtown (17 children or a rate of 40.21), Brooklyn-Centre (78 children or a rate of 27.44), and Clark-Fulton (129 children or a rate of 27.06).⁷

A report on child abuse fatalities in the *Virginia Child Protection Newsletter* (1990) cited research that indicates that between 1993 and 1995, 85 percent of fatalities occurred to children under the age of five, with 45 percent to children under the age of one. Other studies have found that child abuse ranks as the second leading cause of death, after accidents, for children between one and five years old.⁸ How and why do these fatalities occur? It is difficult to pinpoint one main cause for all fatalities attributed to child maltreatment. Between 1993 and 1995, 37 percent of all fatalities were the result of neglect, 48 percent from abuse, and 15 percent as a result of both forms of maltreatment. As a result, a few factors related to these fatalities seem to present themselves year after year. According to a 1995 report by Prevent Child Abuse America, states reported that substance abuse by the abuser was involved in anywhere from 4 percent to 65 percent of all substantiated cases.

CONSUMER GROUP: Families & individuals experiencing violence/abuse

There are clear racial disparities in child welfare. For example, research reported by the Child Welfare League of America found that families of African American children are more likely to be investigated for emotional maltreatment and neglect, fatal or serious injury, and perpetrator involvement with alcohol or drugs, and when maltreatment is recognized by mental health or social services professionals.⁹ Yet, when disadvantaging characteristics (low income, large family size, single-parent homes) are factored in, African American children are maltreated at lower rates than white children.

*Domestic Violence*¹⁰

In 2004, for most police departments in Cuyahoga County (but excluding the City of Cleveland), law enforcement agencies received 2,908 calls for domestic violence incidents. Of these reported assaults, 1,142 individuals were arrested (42 percent of cases resulted in an arrest assuming one individual arrested per case.)

In 2004, there were 5,934 domestic violence assaults reported to the Cleveland Police Department. Of these reported assaults, 1,409 individuals were arrested¹¹ (approximately 24 percent of cases resulted in an arrest assuming one individual arrested per case). For those crimes (reported in Cleveland only) approximately 31 percent of assaults victims were between the ages of 25-34 and another 31 percent were between the ages of 35-54. Eighty-five percent of victims were reported to be female. Note that Cleveland had almost double the number of reported domestic violence incidents than all other Cuyahoga County municipalities combined; however, Cleveland's arrest rate (24 percent) was almost half compared to the remainder of the county (42 percent).

Elder Abuse

Findings from the National Elder Abuse Incidence study suggest that 500,000 Americans aged 60 and older were victims of domestic abuse in 1996. This study also found that only 16 percent of the abuse situations are referred for help, while 84 percent remain hidden.¹²

“Applying the best national estimates to Ohio suggests that approximately 60,000 citizens age 65 and older have been mistreated by someone on whom they relied for care or protection. With the inclusion of self-neglect, the estimated frequency increases to 90,000. This includes elder abuse in both domestic and institutional settings. Nonetheless, state

Consumer Group Snapshot

CONSUMER GROUP: Families & individuals experiencing violence/abuse

| | |
|--|---|
| | <p>reports reveal just a small portion of the problem. Research indicates that at best one in five elder abuse situations are reported to authorities; for certain forms of abuse, reporting is much lower: as low as one in 14 or one in 25 for physical abuse and financial abuse, respectively. In Ohio during fiscal year 2003, with just 60 percent of the 88 counties submitting incident data, there were 10,346 elder abuse reports to APS” (Ohio Elder Abuse Task Force, January 2005).¹³</p> <p>According to the 2004 Annual Report of the Cuyahoga County Department of Senior and Adult Services, in 2004, the Department investigated 2,211 allegations of adult abuse among persons age 18+. Of these: 45.3 percent were self-neglect; 27.2 percent were neglect; 15.3 percent were exploitation; and 12 percent were abuse (verbal/physical).¹⁴ Note that investigations do not necessarily mean that reports were substantiated. These allegations represent 0.2 percent of the county’s population 18 years and older: 994,400 per the American Community Survey 2004.</p> |
| <p><i>Stage Three: Recently Stabilized (Estimated Number/ Percent County Population)</i></p> | <ul style="list-style-type: none"> • Families receiving community supportive services. • Children in foster or adoptive homes • Reunified families |
| <p>Age by Generation</p> | <p>Crosses all generations</p> |
| <p>Risk Factors</p> | <p>According to the World Health Organization (2005):¹⁵</p> <p>“Scientific evidence has shown that the different sub-types of interpersonal violence are interrelated and one may lead to another – for example, victims of child abuse may be more likely to engage in violence as adolescents. Preventing one sub-type can therefore help to prevent other types of interpersonal violence. Moreover, while some risk factors and consequences may be specific to a single sub-type of interpersonal violence, many causes and risk factors are common to all forms. Interventions that target these shared causes and risk factors are likely to be effective at preventing all sub-types.</p> <p>“In one of the most detailed studies of the issue to date, research sponsored by the National Institute of Justice (NIJ) found that childhood abuse and neglect increased the odds of future delinquency and adult criminality overall by 29 percent (Widom and Maxfield, 2001).¹⁶ The “cycle of violence” hypothesis suggests that a childhood history of physical abuse predisposes the survivor to violence in later years. This study reveals that victims of neglect are also likely to</p> |

Consumer Group Snapshot

CONSUMER GROUP: Families & individuals experiencing violence/abuse

develop later violent criminal behavior. If violence is begotten by not only violence, but also by neglect, far more attention needs to be devoted to the families of children who are abandoned and severely malnourished.

“Key issues: Childhood victimization represents a widespread, serious social problem. General delinquency research shows that childhood abuse (physical and sexual) is often associated with delinquency and that the early onset of maltreatment may increase the variety, seriousness, and duration of problems. It is also widely suggested that violence begets violence—that today’s abused children become tomorrow’s violent offenders.”

Further, children who suffer from neglect—not physical abuse—are also at risk. In one study of the influence of early malnutrition on subsequent behavior, previously malnourished children had attention deficits, reduced social skills, and poorer emotional stability than a comparison group.

“Key findings:

- “Being abused or neglected as a child increased the likelihood of arrest as a juvenile by 59 percent, as an adult by 28 percent, and for a violent crime by 30 percent.
- “Maltreated children who were younger at the time of their first arrest, committed nearly twice as many offenses, and were arrested more frequently.
- “Physically abused and neglected (versus sexually abused) children were the most likely to be arrested later for a violent crime.
- “In contrast to earlier research findings, the new results indicate that abused and neglected females were also at increased risk of arrest for violence as juveniles and adults.
- “White abused and neglected children were no more likely to be arrested for a violent crime than their non-abused and non-neglected white counterparts. In contrast, black abused and neglected children in this sample showed significantly increased rates of violent arrests compared with black children who were not maltreated.
- “An out-of-home placement was not related to the number of arrests among those who were removed from their homes due only to abuse and neglect.”

A study of young adolescents in the Cleveland area found that “recent exposure to violence at home was one of the most significant predictors of a teen's use of subsequent violence at school or in the community” (Singer et. al., 1998).¹⁷

Consumer Group Snapshot

CONSUMER GROUP: Families & individuals experiencing violence/abuse

| | |
|---|--|
| | <p>Risk factors for elder abuse include:¹⁸</p> <ul style="list-style-type: none"> • Female; • Older (+80 years); • Isolated (including language barrier); • Low income; • Functional limitation; • Cognitive impairment; • Substance abuse (by caregiver or by older person); • Psychological disorders (of caregiver or of older person); • Previous history of family violence; and • Caregiver burnout or frustration. |
| <p>Historic Trend Line</p> | <p>↓</p> |
| <p>Influencing Factors Underlying Historic Trend Line (+/-)</p> | <p>Per Durose et al (2005):¹⁹ “Nationally, between 1993 and 2002, the rate of family violence declined. In 1993, nationally, an estimated 5.4 victims per 1,000 persons age 12 or older were victimized by a family member, such as a spouse or a parent. In 2002 that rate had fallen to approximately 2.1 family violence victims per 1,000 persons age 12 or older. The downward trend in the rate of family violence mirrored the overall downward trend of all violent crime during the same period. Family violence as a proportion of all violent victimizations has remained fairly stable over the past 10 years. Between 1993 and 2002 about 1 in 10 violent crimes were committed by family members.”</p> <p>Per the World Health Organization (2005):²⁰ “An ecological framework characterizes interpersonal violence as the outcome of interactions between factors at four levels: individuals, close relationships, communities and society.</p> <ul style="list-style-type: none"> • “At the individual level, personal history and biological factors influence how individuals behave and affect their likelihood of becoming a victim or a perpetrator of violence. Risk factors at this level include psychological or personality disorders, alcohol and/or substance abuse and a history of behaving aggressively or having experienced abuse. |

Consumer Group Snapshot

CONSUMER GROUP: Families & individuals experiencing violence/abuse

| | |
|--|---|
| | <ul style="list-style-type: none"> • “Close relationships” such as those between family, friends, intimate partners and peers may also influence the risks of becoming a victim or a perpetrator of violence. For example, experiencing poor parenting, having witnessed violence conflict between parents or having violent friends may influence whether or not a young person engages in or becomes a victim of violence. • “Community contexts” in which relationships occur, such as schools, neighborhoods and workplaces, form surroundings that are favorable or unfavorable to violence. Risk factors at this level may include level of unemployment, population density, mobility and the existence of a local drug or firearm trade. • “Societal factors” influence whether violence is encouraged or inhibited. These factors include poverty, levels of social, economic and gender inequalities, weak economic safety nets, poor rule of law and social and cultural norms around violence.” |
| Life Trajectory | Violence ⇒ Identification of problem and appropriate behavior change ⇒ Healthy development |
| Consumer Impact Strategy | Break the cycle of violence in the community and promote healthy development in young children affected by it. |
| Future Projection | Not available |
| THE SAFETY NET: Which of the 80 safety net core services are needed to empower consumers to positively alter their life trajectory? | |
| <i>Stage One:</i> At Risk | <p>Supportive Service</p> <ul style="list-style-type: none"> • Family Violence Prevention |
| <i>Stage Two:</i> In Crisis | <p>Primary Services</p> <ul style="list-style-type: none"> • Domestic Violence Shelters • Foster Home Placement • Group Homes for Dependent Children |

Consumer Group Snapshot

CONSUMER GROUP: Families & individuals experiencing violence/abuse

| | |
|---|--|
| | <ul style="list-style-type: none"> • Intensive Family Reunification • Sexual Assault Counseling <p>Access Service</p> <ul style="list-style-type: none"> • Medical Expense Assistance <p>Supportive Services</p> <ul style="list-style-type: none"> • Adolescent/Youth Counseling • Adult Basic Education • Children/Adolescent Residential Treatment Facility • Comprehensive Outpatient Substance Abuse Treatment • Employment Preparation • Family Support Center • Family Violence Prevention • GED Instruction • General Counseling Services (Outpatient Mental Health Facilities) • General Legal Aid • Housing Counseling • Money Management • Residential Substance Abuse Treatment • Vocational Rehabilitation |
| <p><i>Stage Three: Recently Stabilized</i></p> | <p>Primary Services</p> <ul style="list-style-type: none"> • Adoption Services <p>Supportive Services</p> <ul style="list-style-type: none"> • Some of the services listed above. |
| <p>Intended or Unintended Philosophy Underlying Service Delivery (i.e., assumptions about what will work)</p> | <p>The following philosophical tenets expand upon the principles set forth in the Adoption and Safe Families Act (ASFA) and the values that underlie sound practices in community responses to child abuse and neglect²¹:</p> <ul style="list-style-type: none"> • “Prevention programs are necessary to strengthen families and reduce the likelihood of child abuse and neglect. • “The responsibility for addressing child maltreatment is shared among community professionals and citizens. • “A safe and permanent home is the best place for a child to grow up. |

Consumer Group Snapshot

CONSUMER GROUP: Families & individuals experiencing violence/abuse

- “When parents (or caregivers) are unable or unwilling to fulfill their responsibilities to provide adequate care and to keep their children safe, Child Protection Services (CPS) has the mandate to intervene.
- “Most parents want to be good parents and have the strength and capacity, when adequately supported, to care for their children and keep them safe.
- “To help families protect their children and meet their basic needs, the community’s response must demonstrate respect for every person involved.
- “Services must be individualized and tailored.
- “Child protection and service delivery approaches should be family centered.
- “Interventions need to be sensitive to the cultures, beliefs, and customs of all families.
- “To best protect a child’s overall well-being, agencies must assure that children move to permanency as quickly as possible.”

Per Domestic Violence Mental Health Policy Initiative (2002):²²
Mental health and substance abuse service providers are not routinely trained to address the social factors that entrap victims in abusive relationships, which can result in falsely interpreting survival strategies as disorders, overlooking the advocacy needs (shelter, legal assistance, safety planning) of domestic violence victims, and not understanding the risks a psychiatric diagnosis can pose for custody battles with an abusive spouse. Likewise, domestic violence advocates are generally not prepared to assess mental health problems and few programs possess the resources to address the mental health needs of the women they serve. This is particularly true for women diagnosed with serious mental illness or substance abuse problems—problems that are often exacerbated by chronic violation and abuse. For a person struggling to find safety from abuse and recover from its traumatic effects, the lack of training and the absence of collaboration among service providers impede optimal care. Linking domestic violence advocacy with mental health and substance abuse service delivery is critical for the prevention of future violence and its consequences.

What Works?

- Per the *Guide to Community Preventive Services*, which provides recommendation on population-based interventions to promote health and to prevent disease, injury, disability, and premature death, appropriate for use by communities and health care systems: “Methods for preventing violence by and against juveniles, including child maltreatment, for which there is strong or sufficient evidence²³:

Consumer Group Snapshot

CONSUMER GROUP: Families & individuals experiencing violence/abuse

- “Behavioral change interventions (therapeutic foster care for reduction of violence by chronically delinquent adolescents); and
- “Health and education system interventions (early childhood home visitation programs).”
- From: Domestic Violence and Family Support Programs: Creating Opportunities to Help Young Children and Their Families:²⁴
 - Young children and their caregivers need to be safe.
 - Young children need to experience warm, supportive, nurturing relationships with their parents and with other caregivers.
 - Young children and their families need to have their basic needs met.
 - Young children and families need to encounter service systems that are welcoming and culturally respectful, and service providers with the cultural knowledge, skills, and attitudes to help them.
 - Young children and their families should be able to receive early, strengths-based interventions to help them avoid the harmful consequences of domestic violence and to reduce the likelihood of entry into the child protection and, ultimately, juvenile court systems.
- An important factor in the decrease of domestic violence incidents during the 1990s was the increased provision of legal services for victims of domestic violence.²⁵
- Public awareness campaigns such as public service announcements and advertisements are common approaches to primary prevention of DV and SA with adults. These campaigns typically provide information regarding the warning signs of violence and community resources for victims and perpetrators.
- Over the past 12 years, our community has transformed its child welfare system into a national model.

In partnership with the Cuyahoga County Department of Children and Family Services (DCFS), well over 100 community agencies have, within their mission, dramatically altered their service provision model with services being provided by 12 neighborhood collaboratives. As a result:

- Children provided services by DCFS are more likely to stay with their own family with

Consumer Group Snapshot

CONSUMER GROUP: Families & individuals experiencing violence/abuse

| | |
|--|---|
| | <p>community agencies providing support (67.5 percent in 2000; 82.8 percent in 2005—1,600 additional children would have been removed and placed).</p> <ul style="list-style-type: none"> • Some children now staying home have very intense mental health conditions and developmental disabilities. Child treatment agencies have developed community-based clinical interventions, family supports, and schooling alternatives to make it possible. • The number of children waiting for a “forever family” has been cut in half: from 2,000 in 2000 to just over 1,000 at end of 2005—again due to multiple community resources being re-focused on creative ways to bring children and families together. |
| <p>What Doesn't Work</p> | <p>Absence of legal system interventions</p> |
| <p>Community-wide Strategies to Impact Life Trajectories</p> | <p>Adapted from recommendations from the World Health Organization: Global Campaign for Violence Prevention (2005):²⁶</p> <ul style="list-style-type: none"> • Create, implement, and monitor a national action plan for violence prevention. • Enhance capacity for collecting data on violence. • Promote primary prevention responses focusing on the conditions that may lead to an individual becoming involved in violence rather than on victims or perpetrators. • Strengthen responses for victims of violence. • Integrate violence prevention into social and educational policies, and thereby promote gender and social equality. • Increase collaboration and exchange of information on violence prevention. <p>Other strategies include:</p> <ul style="list-style-type: none"> • Hotline with immediate professional response; • Coordinated responses & programs; • Legal interventions PLUS social service/mental health; • Breaking the cycle of violence; and • Enhanced public awareness. |
| <p>First Call for Help</p> | <p>Between 2000 and 2004, there were 2,791 requests for services for families with violence and abuse. Of these, 80 (3 percent) were unmet, meaning that there was no agency to which to refer callers. See Attachment 3: First Call for Help for more detail. Note that many calls for child malpractice are made directly to the 696-KIDS hotline of the Cuyahoga County Department of Children and Family Services.</p> |

Consumer Group Snapshot

CONSUMER GROUP: Families & individuals experiencing violence/abuse

RESOURCES

Identified Resources (2003-04)

| Identified Family Violence Revenues | | |
|--|---------------------|------------------|
| As of 5/11/06 | | |
| | Community | UW* |
| Adoption Services | \$11,660,654 | \$0 |
| Domestic Violence Shelter | \$846,367 | \$138,264 |
| Foster Home Placement | \$74,950,988 | \$0 |
| Group Homes for Dependent Children | \$3,799,227 | \$0 |
| Intensive Family Reunification Services | \$2,200,000 | \$0 |
| Sexual Assault Counseling | \$144,125 | \$94,125 |
| Total | \$93,601,361 | \$232,389 |

* UW revenues are included in community totals.

NOTE: This does not include all monies for this consumer group. See Attachment 4 for details and Attachment 5 for a Revenue Checklist.

Government Resource Trend Line

Varies

Future Direction of Government Funding

Because of decreases in the number of children in permanent custody of the Cuyahoga County Department of Children and Family Services, child welfare related funding is likely to decrease (adoption, domestic violence shelter, family violence, foster home placement, and group homes for dependent children).

According to the 2005 Ohio Elder Abuse Taskforce Report, in Ohio funding remains a critical problem for adult protective service (APS) programs. The task force was unable to determine the total cost of operating APS and providing protective services, due to the lack of statewide data. As noted in the OSU (Ohio State University) report, APS funding varies considerably among Ohio counties, resulting in inconsistencies in services and protections for the elderly. The task force recognizes that many of the APS program recommendations have a cost associated with implementation.²⁷ The Social Services Block Grant (SSBG) SSBG is the only federal funding source available to states for APS.²⁸ SSBG funding has been chipped away over the past decade: from a high of \$2.8 billion a year to its current authorized level of \$1.7

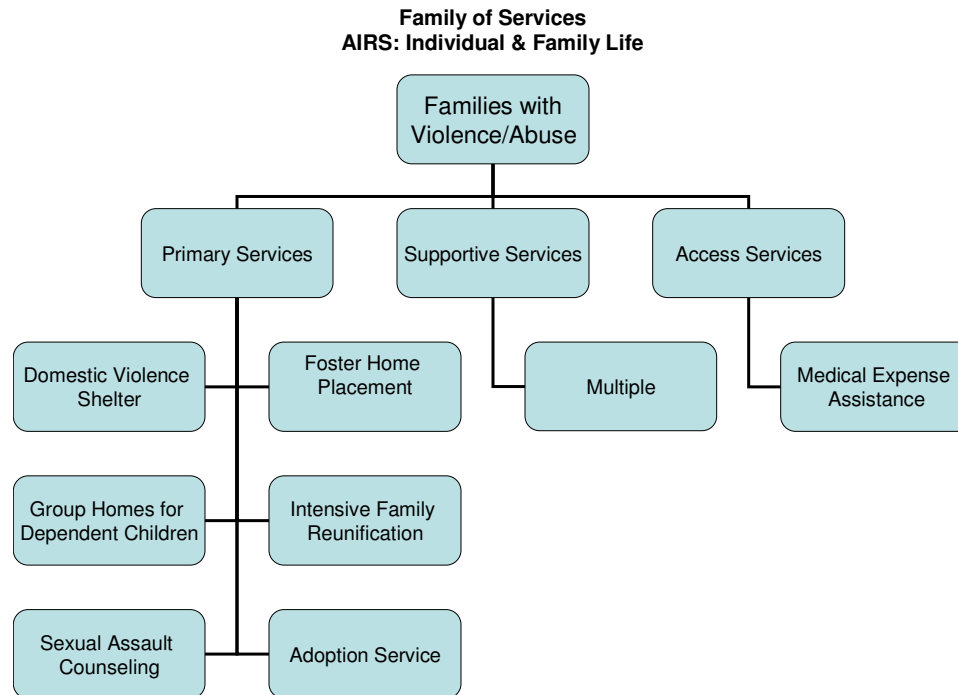
Consumer Group Snapshot

CONSUMER GROUP: Families & individuals experiencing violence/abuse

| | |
|-----------------------------|--|
| | <p>billion a year. There is only one federal program that dedicates categorical funds for elder abuse <i>prevention</i> and that is Title VII of the Older Americans Act. It was made a separate title by Congress to consolidate and expand certain programs that focus on the protection of the rights of older persons that had been previously under Title III. Its mission and purposes are sound. Its resources are not. The entire Title VII of the act has a current appropriation of just over \$20 million.²⁹</p> |
| <p>Return on Investment</p> | <p>Estimated Direct Costs of Child Maltreatment³⁰:</p> <ul style="list-style-type: none"> • Hospitalization - \$6,205,395,000 • Chronic Health Problems - \$2,987,957,400 • Mental Health Care System - \$425,110,400 • Child Welfare System - \$14,400,000,000 • Law Enforcement: \$24,709,800 • Judicial System: \$341,174,702 • Total Direct Costs: \$24,384,347,302 <p>The Adverse Childhood Experiences study, in which approximately 30,000 middle-aged, middle-class and mostly employed residents of the state of California in the United States of America participated, suggests that childhood abuse and household dysfunction contribute to the development, decades later, of the chronic diseases that are the most common causes of death and disability in the USA. Some of these were: self-reports of cigarette smoking, obesity, physical inactivity, alcoholism, drug abuse, depression, suicide attempts, sexual promiscuity, and sexually transmitted diseases. The more adverse childhood experiences reported, the more likely the person was to have heart disease, cancer, stroke, diabetes, skeletal fractures, liver disease, and poor self-rated health as an adult. Abuse and other adverse childhood experiences may be among the basic causes that underlie health risks, illness, and death.³¹</p> |

ATTACHMENTS

Attachment 1: Family of Services



Consumer Group Snapshot

Attachment 2: Consumer Matrix

| CORE SERVICES | SUB-CONSUMER GROUPS | ESTIMATED PERSONS IN NEED | | | ESTIMATED UNIVERSE OF POSSIBLE CONSUMERS | | |
|-------------------|--|---|--------|---|---|--------|---|
| | | Description | Number | % of Total Population Families Households | Description | Number | % of Total Population Families Households |
| Adoption Services | Children birth to 17 years who have been abused or neglected and are in permanent custody of the Cuyahoga County Department of Children and Families, waiting for adoption. Consumers can also include individuals seeking to adopt a child, birth parents seeking to relinquish their parental rights and post-adoptive families. | Status of children in permanent commitment of Cuyahoga County and waiting for adoption in the public system, Cuyahoga County Dept of Children & Family Services (CFS) 2005. | 1,121 | 0.1% Population | An actual 1,121 persons need adoption services, which is the number of children under the age of 18 in the permanent commitment of the Cuyahoga County Department of Children and Family Services (DCFS). This is also the estimated universe of possible consumers for adoption since all are waiting for adoption. Note that this is a point-in-time estimate; in reality it is an ongoing process. | 1,121 | 0.1% Population |

Consumer Group Snapshot

Attachment 2: Consumer Matrix (continued)

| CORE SERVICES | SUB-CONSUMER GROUPS | ESTIMATED PERSONS IN NEED | | | ESTIMATED UNIVERSE OF POSSIBLE CONSUMERS | | |
|----------------------------|---|---|--------|---|---|--------|---|
| | | Description | Number | % of Total Population Families Households | Description | Number | % of Total Population Families Households |
| Domestic Violence Shelters | Women and children who have experienced domestic violence through rape or other physical assault. | Tjaden, P. and N. Thoennes. (2000, July). Extent, nature, and consequences of intimate partner violence - findings from the National Violence Against Women Survey. National Institute of Justice Centers for Disease Control and Prevention. 1.8 percent of women 18+ were totally victimized in the past 12 months. | 10,182 | 0.7% Population | Based on available information about actual consumers (702), 9,480 persons are unknown consumers or non-consumers. (10,182 – 702 = 9,480) No national data studies were identified to guide the estimate of persons who would use a domestic violence shelter. However, the Maricopa, Arizona community recently conducted a needs assessment of demand for domestic violence shelters (Burk & Knopf, 2005). The data showed that 23 percent of residents indicated they stayed at home if they could not find shelter the same day they needed help, which meant they stayed with their abuser and remained in danger. Recognizing this data may not accurately reflect Cuyahoga County, it was used in the absence of other data. Thus, it is estimated that 23 percent of persons who reported staying at home would have used the service if it were available, resulting in 2,180 would-be users, or those with unrealized access. (9,480 x 23% = 2,180) Including both realized (702) and unrealized (2,180) access, the estimated universe of possible consumers is 2,882. | 2,882 | 0.2% Population |

Consumer Group Snapshot

Attachment 2: Consumer Matrix (continued)

| CORE SERVICES | SUB-CONSUMER GROUPS | ESTIMATED PERSONS IN NEED | | | ESTIMATED UNIVERSE OF POSSIBLE CONSUMERS | | |
|------------------------------------|--|---|--------|---|---|--------|---|
| | | Description | Number | % of Total Population Families Households | Description | Number | % of Total Population Families Households |
| Foster Home Placement | Children ages 0-17 children who are in the custody of the Cuyahoga County Department of Children & Family Services and in temporary commitment with foster families or relatives; planned permanent living arrangement (PPLA) or long term foster care; and in permanent commitment waiting for adoption in the public system. | Status of children in custody of Cuyahoga County, Cuyahoga County Dept. of Children & Family Services (CFS) as of December 2005. | 2,553 | 0.2% Population | An estimated 2,553 persons need foster home placement, which is the number of children in permanent and temporary commitment of DCFS as of December 2005. This number is equal to the actual number of consumers (realized access), and to the estimated universe of possible consumers. | 2,553 | 0.2% Population |
| Group Homes for Dependent Children | Youth ages birth through 17 who have been neglected, abused or abandoned, are in the permanent custody of the child welfare agency, are troubled by learning, emotional, and behavioral problems, who are unable to live with their own family or a foster family, and who would benefit from a professionally supervised, treatment-oriented, structured group environment. | Status of children in custody of Cuyahoga County and in group homes, Cuyahoga County Dept of Children & Family Services (CFS) as of December 2005 | 148 | 0.01% Population | A conservative estimate of 148 children potentially need group homes, which is the number of children/youth in the county's custody living in a group home in December 2005. This number is equal to the actual number of consumers (realized access), and to the estimated universe of possible consumers. | 148 | 0.01% Population |

Consumer Group Snapshot

Attachment 2: Consumer Matrix (continued)

| CORE SERVICES | SUB-CONSUMER GROUPS | ESTIMATED PERSONS IN NEED | | | ESTIMATED UNIVERSE OF POSSIBLE CONSUMERS | | |
|---|---|---|--------|---|---|--------|---|
| | | Description | Number | % of Total Population Families Households | Description | Number | % of Total Population Families Households |
| Intensive Family Reunification Services | Children who are in temporary custody of the county and living with foster families or relatives, and whose families are seeking help with the reunification process. The family is the service consumer; however, data is available by child and not by family unit. | Cuyahoga County Department of Children and Family Services. Summary Monthly Statistical Report. (2006, September) | 945 | 0.1% Population | The estimate of 945 persons needing intensive family reunification services includes those in temporary custody of DCFS in December 2005. There were also 350 children with a temporary court order for the same period. According to Jim McCafferty, director of DCFS, approximately 95 percent of families eligible to receive this service do so. The remaining 5 percent are not viable candidates. Families with heinous and/or multiple offenses may not be approved for services. In addition, it does not account for children whose maltreatment does not come to the attention of DCFS. | N/A | N/A |

Consumer Group Snapshot

Attachment 2: Consumer Matrix (continued)

| CORE SERVICES | SUB-CONSUMER GROUPS | ESTIMATED PERSONS IN NEED | | | ESTIMATED UNIVERSE OF POSSIBLE CONSUMERS | | |
|---------------------------|---|--|---------|---|---|--------|---|
| | | Description | Number | % of Total Population Families Households | Description | Number | % of Total Population Families Households |
| Sexual Assault Counseling | Any female or male ever raped at some point during her or his lifetime. | Tjaden, P. and Thoennes, N. (2000, July). Extent, nature, and consequences of intimate partner violence - findings from the National Violence Against Women Survey. National Institute of Justice Centers for Disease Control and Prevention. 0.3 percent of women were raped in the previous 12 months. Using a definition of rape that includes forced vaginal, oral, and anal intercourse, the survey found that rape is a crime committed primarily against youth. 18 percent of women surveyed said they experienced a completed or attempted rape at some time in their life and 0.3 percent said they experienced a completed or attempted rape in the previous 12 months. Of the women who reported being raped at some time in their lives, 22 percent were under 12 years old and 32 percent were 12 to 17 years old when they were first raped. (By calculation, the percent is 17.6 percent average for women and for men, 3 percent.) | 149,274 | 10.7% Population | The estimated number of those with unrealized access, i.e., those who would use the service if it were available and accessible is 25,193. This number was determined by applying the percentage of victims of rape or sexual assault who seek medical treatment for sexual assault (17 percent based on a Bureau of Justice Statistics report of 2002—11 percent reported to police and 6 percent did not report) to the number of persons in need who are non-consumers and adding this to the number of actual consumers (1,080). Notice that the Bureau of Justice Statistics only deals with females who report to the police. There is no information about the number of males who report to the police, so the female percentage was applied to the entire population. (148,194 x 17% = 25,193). The estimated universe of possible consumers is 26,273, including those with realized access (1,080) and unrealized access (25,193). | 26,273 | 1.9% Population |

Consumer Group Snapshot

Attachment 3: First Call for Help

| Families & individuals experiencing violence/abuse | | | | | | | | | | | | |
|--|----------------|------------|------------|------------|------------|------------|------------|------------|------------|------------|------------|------|
| CORE SERVICES | TOTAL REQUESTS | | | | | %Change* | MET | | | | | |
| | 2000 | 2001 | 2002 | 2003 | 2004 | | 00&04 | 2000 | 2001 | 2002 | 2003 | 2004 |
| Adoption Services | 22 | 16 | 20 | 33 | 17 | (23%) | 22 | 16 | 19 | 32 | 17 | |
| Domestic Violence Shelters | 397 | 391 | 466 | 646 | 574 | 45% | 377 | 375 | 455 | 630 | 566 | |
| Foster Home Placement | 0 | 0 | 0 | 2 | 0 | N/A | 0 | 0 | 0 | 2 | 0 | |
| Group Homes for Dependent Children | 6 | 2 | 2 | 2 | 2 | (67%) | 3 | 0 | 2 | 2 | 2 | |
| Intensive Family Reunification Services | 0 | 1 | 0 | 3 | 1 | N/A | 0 | 1 | 0 | 3 | 0 | |
| Sexual Assault Counseling | 29 | 35 | 39 | 33 | 52 | 79% | 29 | 34 | 39 | 33 | 52 | |
| Total | 454 | 445 | 527 | 719 | 646 | 42% | 431 | 426 | 515 | 702 | 637 | |

| Families & individuals experiencing violence/abuse | | | | | | | | | |
|--|-----------|-----------|-----------|-----------|----------|--------------|--------------|-----------|-----------|
| CORE SERVICES | UNMET | | | | | TOTALS 00-04 | | | % Unmet |
| | 2000 | 2001 | 2002 | 2003 | 2004 | Req. | Met | Unm. | |
| Adoption Services | 0 | 0 | 1 | 1 | 0 | 108 | 106 | 2 | 2% |
| Domestic Violence Shelters | 20 | 16 | 11 | 16 | 8 | 2,474 | 2,403 | 71 | 3% |
| Foster Home Placement | 0 | 0 | 0 | 0 | 0 | 2 | 2 | 0 | 0% |
| Group Homes for Dependent Children | 3 | 2 | 0 | 0 | 0 | 14 | 9 | 5 | 36% |
| Intensive Family Reunification Services | 0 | 0 | 0 | 0 | 1 | 5 | 4 | 1 | 20% |
| Sexual Assault Counseling | 0 | 1 | 0 | 0 | 0 | 188 | 187 | 1 | 1% |
| Total | 23 | 19 | 12 | 17 | 9 | 2,791 | 2,711 | 80 | 3% |

Consumer Group Snapshot

Attachment 4: Revenue Tables

| Adoption Services | | | | | |
|---|--------|--|-------------------|---|-------------------|
| Revenues as of May 11, 2006 | | | | | |
| Funder | Period | A | | B | |
| | | Identifiable Total Dollars Countywide | | Total Dollars UW- Funded Agencies (Actual FY2004) | |
| | | Amount | % of Total (A) | Amount | % of Total (B) |
| Cleveland Foundation, The | | 30,000 | | | |
| Gund Foundation, The George | | 143,820 | | | |
| Saint Ann Foundation | | 25,000 | | | |
| Total - Foundations & Trusts | | 198,820 | 1.71% | 0 | N/A |
| Community Shares | | 20,861 | | | |
| United Black Fund of Greater Cleveland | | 19,000 | | | |
| Total - Federated Fundraising Organizations | | 39,861 | 0.34% | 0 | N/A |
| Department of Children and Family Services | 2004 | 11,421,973 | | | |
| Subtotal Cuyahoga County Funding Sources | | 11,421,973 | 97.95% | 0 | N/A |
| Total - Contracts/grants from government organizations | | 11,421,973 | 97.95% | 0 | N/A |
| Subtotal Non - UWGrCle Support | | 11,660,654 | 100% | 0 | N/A |
| Total Support/Revenue | | 11,660,654 | 100% | 0 | N/A |

Consumer Group Snapshot

Attachment 4: Revenue Tables (continued)

| Domestic Violence Shelters | | | | | |
|---|--------|---------------------------------------|----------------|--|----------------|
| Revenues as of May 11, 2006 | | | | | |
| Funder | Period | A | | B | |
| | | Identifiable Total Dollars Countywide | | Total Dollars UW-Funded Agencies (Actual FY2004) | |
| | | Amount | % of Total (A) | Amount | % of Total (B) |
| 1525 Foundation | | 30,000 | | | |
| Abington Foundation, The | | 20,000 | | | |
| Reuter Foundation, The | | 10,000 | | 18,327 | |
| Saint Ann Foundation | | 15,000 | | | |
| Other Corporate Foundations - Not Elsewhere Classified | | 2,000 | | 6,000 | |
| Total - Foundations & Trusts | | 77,000 | 9.10% | 24,327 | 1.98% |
| Community Shares | | 20,861 | | 19,853 | |
| United Black Fund of Greater Cleveland | | 20,000 | | | |
| Total - Federated Fundraising Organizations | | 40,861 | 4.83% | 19,853 | 1.62% |
| Department of Housing and Urban Development | | | | 143,061 | |
| Federal Emergency Management Agency (FEMA) | 2004 | 17,485 | | 17,485 | |
| Emergency Shelter Grant (ESG) | 2004 | 96,000 | | 17,485 | |
| Subtotal Federal Government | | 113,485 | 13.41% | 178,031 | 14.52% |
| Department of Development (includes CSBG) | | | | 54,654 | |
| Ohio Trust Fund | 2004 | 102,600 | | | |
| Victims of Crime Assistance (VOCA) (through Attorney General) | | | | 114,881 | |
| Subtotal State of Ohio | | 102,600 | 12.12% | 169,535 | 13.82% |
| Children Who Witness Violence | | | | 101,216 | |
| Justice Affairs - Marriage License Funds for Domestic Violence Shelters | 2004 | 301,412 | | | |
| Other Cuyahoga County Funders - Not Elsewhere Classified | | | | 50,000 | |
| Subtotal Cuyahoga County Funding Sources | | 301,412 | 35.61% | 151,216 | 12.33% |
| Community Development Block Grant | 2004 | 72,745 | | 68,658 | |
| Other City of Cleveland Funders - Not Elsewhere Classified | | | | 81,459 | |
| Subtotal City of Cleveland Funding Sources | | 72,745 | 8.59% | 150,117 | 12.24% |

Consumer Group Snapshot

Attachment 4: Revenue Tables (continued)

| Domestic Violence Shelters | | | | | |
|---|--------|---------------------------------------|----------------|--|----------------|
| Revenues as of May 11, 2006 | | | | | |
| Funder | Period | A | | B | |
| | | Identifiable Total Dollars Countywide | | Total Dollars UW-Funded Agencies (Actual FY2004) | |
| | | Amount | % of Total (A) | Amount | % of Total (B) |
| Cities - Not Elsewhere Classified | | | | 30,773 | |
| Subtotal Other Municipal Funding Sources | | 0 | 0.00% | 30,773 | 2.51% |
| All Other Funding - Not Elsewhere Classified | | | | 364,292 | |
| Subtotal Other Govt Funding Sources | | 0 | 0.00% | 364,292 | 29.70% |
| Total - Contracts/grants from government organizations | | 590,242 | 69.74% | 1,043,965 | 85.12% |
| Subtotal Non - UWGrCle Support | | 708,103 | 83.66% | 1,088,145 | 88.73% |
| Total - UWGrCle designations applied to program | | 30,500 | 3.60% | 30,500 | 2.49% |
| Total - UWGrCle investment committee allocation | | 92,764 | 10.96% | 92,764 | 7.56% |
| Contingency Grants | | 15,000 | | 15,000 | |
| Total - Special UWGrCle grants applied to programs | | 15,000 | 1.77% | 15,000 | 1.22% |
| Subtotal UWGrCle Support - 4001, 4701 & 4703 | | 138,264 | 16.34% | 138,264 | 11.27% |
| Total Support/Revenue | | 846,367 | 100% | 1,226,409 | 100% |

Consumer Group Snapshot

Attachment 4: Revenue Tables (continued)

| Foster Home Placement | | | | | |
|---|--------|---------------------------------------|----------------|--|----------------|
| Revenues as of May 11, 2006 | | | | | |
| Funder | Period | A | | B | |
| | | Identifiable Total Dollars Countywide | | Total Dollars UW-Funded Agencies (Actual FY2004) | |
| | | Amount | % of Total (A) | Amount | % of Total (B) |
| Jewish Community Federation | | 300,000 | | | |
| United Black Fund of Greater Cleveland | | 26,000 | | | |
| Total - Federated Fundraising Organizations | | 326,000 | 0.43% | 0 | N/A |
| Cuyahoga Metropolitan Housing Authority (CMHA) | 2004 | 45,381 | | | |
| Department of Children and Family Services | 2004 | 74,579,607 | | | |
| Subtotal Cuyahoga County Funding Sources | | 74,624,988 | 99.57% | 0 | N/A |
| Total - Contracts/grants from government organizations | | 74,624,988 | 99.57% | 0 | N/A |
| Subtotal Non - UWGrCle Support | | 74,950,988 | 100% | 0 | N/A |
| Total Support/Revenue | | 74,950,988 | 100% | 0 | N/A |

Consumer Group Snapshot

Attachment 4: Revenue Tables (continued)

| Group Homes for Dependent Children | | | | | |
|---|--------|---------------------------------------|----------------|--|----------------|
| Revenues as of May 11, 2006 | | | | | |
| Funder | Period | A | | B | |
| | | Identifiable Total Dollars Countywide | | Total Dollars UW-Funded Agencies (Actual FY2004) | |
| | | Amount | % of Total (A) | Amount | % of Total (B) |
| Abington Foundation, The | | 10,000 | | | |
| Britton Fund | | 10,000 | | | |
| Bruening Foundation, Eva L. and Joseph M. | | 62,000 | | | |
| Total - Foundations & Trusts | | 82,000 | 2.16% | 0 | N/A |
| Department of Children and Family Services | | 3,717,227 | | | |
| Subtotal Cuyahoga County Funding Sources | | 3,717,227 | 97.84% | 0 | N/A |
| Total - Contracts/grants from government organizations | | 3,717,227 | 97.84% | 0 | N/A |
| Subtotal Non - UWGrCle Support | | 3,799,227 | 100% | 0 | N/A |
| Total Support/Revenue | | 3,799,227 | 100% | 0 | N/A |

Attachment 4: Revenue Tables (continued)

Intensive Family Reunification

As of May 11, 2006, \$2.2 million in revenues for intensive family reunification programs has been identified countywide. All revenues came from the Department of Children and Family Services (DCFS). United Way of Greater Cleveland does not currently fund intensive family reunification services programs.

Consumer Group Snapshot

Attachment 4: Revenue Tables (continued)

| Sexual Assault Counseling | | | | | |
|---|--------|---------------------------------------|----------------|--|----------------|
| Revenues as of May 11, 2006 | | | | | |
| Funder | Period | A | | B | |
| | | Identifiable Total Dollars Countywide | | Total Dollars UW-Funded Agencies (Actual FY2004) | |
| | | Amount | % of Total (A) | Amount | % of Total (B) |
| Total - Contributions and dues (less UW designations) | | | 0.00% | 8,400 | 3.27% |
| Bruening Foundation, Eva L. and Joseph M. | | | | 15,000 | |
| Deaconess Community Foundation | | 25,000 | | | |
| Prentiss Foundation, Elisabeth Severance | | 15,000 | | | |
| Saint Ann Foundation | | | | 10,000 | |
| Wean Foundation, The Raymond John | | | | 10,000 | |
| Woodruff Foundation, The | | | | 10,000 | |
| Other Private Foundations - Not Elsewhere Classified | | | | 14,900 | |
| Total - Foundations & Trusts | | 40,000 | 27.75% | 59,900 | 23.35% |
| Total - Special Events - Growth | | | 0.00% | 22,100 | 8.62% |
| United Black Fund of Greater Cleveland | | 10,000 | | | |
| Total - Federated Fundraising Organizations | | 10,000 | 6.94% | 0 | 0.00% |
| Victims of Crime Assistance (VOCA) (through Attorney General) | | | | 72,000 | |
| Subtotal State of Ohio | | 0 | 0.00% | 72,000 | 28.07% |
| Total - Contracts/grants from government organizations | | 0 | 0.00% | 72,000 | 28.07% |
| Subtotal Non - UWGrCle Support | | 50,000 | 34.69% | 162,400 | 63.31% |
| Total - UWGrCle investment committee allocation | | 90,375 | 62.71% | 90,375 | 35.23% |
| John K. Mott Youth Fund Distribution Grant | | 3,750 | | 3,750 | |
| Total - Special UWGrCle grants applied to programs | | 3,750 | 2.60% | 3,750 | 1.46% |
| Subtotal UWGrCle Support - 4001, 4701 & 4703 | | 94,125 | 65.31% | 94,125 | 36.69% |
| Total Support/Revenue | | 144,125 | 100% | 256,525 | 100% |

Consumer Group Snapshot

Attachment 5: Revenue Checklist

| Families & individuals experiencing violence/abuse | | | | | | | | | |
|--|--|-------------------|----------------------------|-----------------------|------------------------------------|---|---------------------------|--|--|
| Category | Administrator of Funding | Adoption Services | Domestic Violence Shelters | Foster Home Placement | Group Homes for Dependent Children | Intensive Family Reunification Services | Sexual Assault Counseling | | |
| Private Foundation | 1525 Foundation | | ✓ | | | | | | |
| Private Foundation | Abington Foundation, The | | ✓ | | ✓ | | | | |
| Private Foundation | Britton Fund | | | | ✓ | | | | |
| Private Foundation | Bruening Foundation, Eva L. and Joseph M. | | | | ✓ | | | | |
| Private Foundation | Cleveland Foundation, The | ✓ | | | | | | | |
| Private Foundation | Deaconess Community Foundation | | | | | ✓ | | | |
| Private Foundation | Gund Foundation, The George | ✓ | | | | | | | |
| Private Foundation | Prentiss Foundation, Elisabeth Severance | | | | | ✓ | | | |
| Private Foundation | Reuter Foundation, The | | ✓ | | | | | | |
| Private Foundation | Saint Ann Foundation | ✓ | ✓ | | | | | | |
| Corporate Foundation | Other Corporate Foundations - Not Elsewhere Classified | | ✓ | | | | | | |
| Federated Organization | Community Shares | ✓ | ✓ | | | | | | |
| Federated Organization | Jewish Community Federation | | | ✓ | | | | | |
| Federated Organization | United Black Fund of Greater Cleveland | ✓ | ✓ | ✓ | | ✓ | | | |
| Federal Government | Department of Health and Human Services | | x | | | | | | |
| Federal Government | Department of Justice | | | | | x | | | |
| Federal Government | Federal Emergency Management Agency (FEMA) | | ✓ | | | | | | |
| State of Ohio | Trust Fund | | ✓ | | | | | | |
| Cuyahoga County | Cuyahoga Metropolitan Housing Authority (CMHA) | | | ✓ | | | | | |
| Cuyahoga County | Department of Children and Family Services | ✓ | | ✓ | ✓ | ✓ | | | |
| Cuyahoga County | Department of Justice Affairs | | ✓ | | | | | | |
| City of Cleveland | Department of Community Development | | ✓ | | | | | | |

Consumer Group Snapshot

Attachment 5: Revenue Checklist (continued)

| Families & individuals experiencing violence/abuse | | | | | | | | | |
|--|---|-------------------|----------------------------|-----------------------|------------------------------------|---|---------------------------|--|--|
| Category | Administrator of Funding | Adoption Services | Domestic Violence Shelters | Foster Home Placement | Group Homes for Dependent Children | Intensive Family Reunification Services | Sexual Assault Counseling | | |
| 3rd Party Payee/Direct Bill | Medicaid | | | | | | x | | |
| 3rd Party Payee/Direct Bill | Other Private Insurer | | | | | | x | | |
| United Way Greater Cleve | Contingency Grants | | ✓ | | | | | | |
| United Way Greater Cleve | John K. Mott Youth Fund Distribution Grant | | | | | | ✓ | | |
| United Way Greater Cleve | United Way of Greater Cleveland investment committee allocation | | ✓ | | | | ✓ | | |
| <p>✓ = Revenue was identified specifically for this core service and the amount allocated in Cuyahoga County appears in the revenue table of the core service report.</p> <p>x = Revenue was identified from these sources, but no dollar amount is available because either it was not possible to obtain data for Cuyahoga County alone, or it was not possible to obtain data specifically for this core service because funding covers multiple core services.</p> | | | | | | | | | |

NOTES

- 1 Knapp, J.F., Dowd M.D. (1998). Family violence: implications for the pediatrician. *Pediatric Review 1998*:19:316-21 in American Academy of Family Physicians: Violence (Position Paper), Retrieved on November 8, 2005 from: <http://www.aafp.org/x7132.sml?printxml>
- 2 De Benedictis, Tina and Jaelline Jaffe, and Jeanne Segal. (2004, June). Child abuse: Types, signs, symptoms, causes. *Helpguide – Mental Health Issue*. http://www.helpguide.org/mental/child_abuse_physical_emotional_sexual_neglect.htm
- 3 Ohio Elder Abuse Task Force Report. (2005, January). Retrieved on May 27, 2006 from http://www.ag.state.oh.us/citizen/pubs/eatf/04eatf_rpt.pdf
- 4 Goldman, Jill; Salus, Marsha K.; Wolcott, Deborah; Kennedy, Kristie Y. (2003). Coordinated response to child abuse and neglect: The foundation. U.S. Department of Health and Human Services Administration for Children and Families, Administration on Children, Youth and Families, Children’s Bureau, Office on Child Abuse and Neglect.
- 5 Knapp, J.F., Dowd, M.D. (1998).
- 6 Cuyahoga County Department of Children and Family Services. (2005).
- 7 NEO CANDO system. (n.d.). Child maltreatment-children with substantiated or indicated reports, year: 2005. Center on Urban Poverty and Community Development, MSASS, Case Western Reserve University. Retrieved March 26, 2007 from (<http://neocando.case.edu>)
- 8 Child Abuse Fatalities. (1990, Fall). *Virginia Child Protection Newsletter*, 32: 1-16. Retrieved on May 26, 2006 from <http://psychweb.cisat.jmu.edu/graysojh/volume%2058.pdf>
- 9 Source: Race Matters: The Overrepresentation of African Americans in the Child Welfare System, a compilation of draft papers presented at the Race Matters Forum, January 2001, cosponsored by the Children and Family Research Center and Westat in Green, Michelle. Y. Minority as Majority: Disproportionality in child Welfare and Juvenile Justice. Children’s Voice Article, November/December 2002. Child Welfare League of America. Retrieved on May 26, 2006 from <http://www.cwla.org/articles/cv0211minorities.html>
- 10 Tracking of domestic violence incidents and comparing the findings among municipalities is difficult. Local police departments in Ohio are not required to track domestic violence incidents in a single, consistent format. The Ohio Attorney General’s Office in cooperation with the Ohio Domestic Violence Network collects domestic violence arrest data; however, reporting is not required, and not all municipalities, including the City of Cleveland, submit this data. Additionally, many calls and arrests are not classified as domestic violence. This often results in the underreporting of incidents (personal communication, Tana Carpenter, Ohio Domestic Violence Network, February 21, 2007). Though the City of Cleveland does not report domestic violence incidents to the Ohio Attorney General, it does have its own reporting system which is available through Case’s Northeast Ohio Community and Neighborhood Data for Organizing (NEO CANDO) Social and Economic Data reports. Cleveland Police provide data on age and gender of both victim and offender. Other police departments do not always track this data, and this data was not found for the remainder of county municipalities. For these reasons, City of Cleveland domestic violence incidents and the remainder of Cuyahoga County incidents are separated.
- 11 All City of Cleveland arrests are assumed to be made under O.R.C. §2919.25 or O.R.C. §2919.27.
- 12 The National Center on Elder Abuse at The American Public Human Services Association. (1998). The National Elder Abuse Incidence Study. Retrieved on May 26, 2006 from http://www.aoa.gov/eldfam/Elder_Rights/Elder_Abuse/ABuseReport_Full.pdf
- 13 Ohio Elder Abuse Task Force Report. (January 2005).
- 14 Cuyahoga County Department of Senior and Adult Services. Annual report 2004. Retrieved on May 27, 2006 from <http://dsas.cuyahogacounty.us/PDF/2004annual%20report.pdf>
- 15 World Health Organization (2005) Building global commitment for violence prevention .Retrieved on April 26, 2006 from <http://www.vahealth.org/civp/preventviolenceva/Youth%20Violence%20for%20Providers/WHOREport.pdf>
- 16 Widom, Cathy S. and Michael G. Maxfield. (2001, February). An update on the “cycle of violence.” National Institute of Justice – Issue in Brief. Retrieved on April 29, 2006 from <http://www.ncjrs.gov/pdffiles1/nij/184894.pdf>

Consumer Group Snapshot

- 17 Singer, M.I., Miller, D.B., Guo, S. et. al., (1998). The mental health consequences of children's exposure to violence, Cleveland, Ohio: Cuyahoga County. Community Mental Health Research Institute, Mandel School of Applied Social Sciences, Case Western Reserve University as quoted in Rosewater, A., Promoting prevention, targeting teens: An emerging agenda to prevent domestic violence. Family Violence Prevention Fund. (2003), 6. Edleson, J. as quoted in Rosewater, A. (2003).
- 18 Institute on Aging. (n.d.) Elder Abuse Fact Sheet. Retrieved March 26, 2007 from <http://www.ioaging.org/programs/eap/eafacts.html>
- 19 Durose, Matthew R.; Harlow, Caroline Wolf; Langan, Patrick A.; Motivans, Mark; Rantala, Ramon R. and Smith, Erica L. (2005) Family Violence Statistics. U.S. Department of Justice.
- 20 World Health Organization. (2005).
- 21 Goldman et al. (2003).
- 22 Domestic Violence Mental Health Policy Initiative. (2002). Cook County Bureau of Health Services. Available from <http://www.dvmhpi.org/>
- 23 Guide to community preventive services: Systematic reviews and evidence based recommendations. (2003). *Violence Prevention*. Retrieved on April 26, 2006 from <http://www.thecommunityguide.org/violence/>
- 24 Ahsan, Nilofer. (2004). Domestic violence and family support programs: Creating opportunities to help young children and their families.
- 25 Farmer, A. and Tiefenthaler, J. (2003). Explaining the recent decline in domestic violence. Retrieved March 26, 2007 from <http://www.lanwt.org/pdfs/exdo.pdf>
- 26 World Health Organization. (2005).
- 27 Ohio Elder Abuse Taskforce. (2005).
- 28 Stack, Suzanne Linnane. (n.d.). National Aging I & R Symposium-Elder abuse hotline: Streamlining access to services. National Center on Elder Abuse. Retrieved March 26, 2007 from www.nasua.org/ppt/A-2-a%20%20Elder%20Abuse%20Hotline%20-%20NCEA%20Presentation.ppt
- 29 Statement to Senators Enzi, Kennedy, DeWine, and Mikulski. Retrieved from http://help.senate.gov/Hearings/2006_02_14_b/Blancato.pdf
- 30 Prevent Child Abuse America. (2001). Total estimated cost of child abuse and neglect in the United States: Statistical evidence. Retrieved August 1, 2001, from http://preventchildabuse.org/learn_more/research_docs/costanalysis.pdf in Goldman et al, 2003
- 31 Adapted from:Centers for Disease Control. (1998, May 4). Adult health problems linked to traumatic childhood experiences. Press Release. Retrieved on April 26, 2006 from www.cdc.gov/od/oc/media/pressrel/r980514.html



**United Way of
Greater Cleveland**

1331 Euclid Avenue

Cleveland, Ohio 44115

uws.org/CoreServicesPlanning