



UNITED WAY  
Greater Cleveland



# UNITED IS THE WAY

Report to the Community 2024 - 2025



# CONTENTS

**04** Welcome Letter

**06** Providing the Right Help  
at the Right Time

**10** Building Innovative Solutions  
with Our Unique Insights

**14** Working Together to Support  
Economic Mobility for All

**20** Resource Development

**28** Leadership





# AT UNITED WAY OF GREATER CLEVELAND,

we believe every person deserves the chance to achieve lasting financial security.

That means being able to cover basic needs, having some savings, and planning for the future without living one crisis away from disaster. Every day, we work to make that vision a reality by connecting people to opportunity, support, and solutions that work, not just in moments of crisis, but throughout their journey toward stability and success.

One of the most powerful examples of this is our United Way 211 helpline. This year, United Way 211 answered more than 226,000 calls, connecting people to food, housing, utilities, workforce training, medical support, and more. During last summer's storms, when five tornadoes caused widespread

outages and hardship, 211 answered the surge in calls, updated nearly 500 resources, and worked with more than 80 agencies to get help to neighborhoods that needed it most.

Often \$500 for a car repair, utility bill, or needed medical care can be all it takes to keep a family in their home, a student in school, or a hardworking parent on the job. 211 directly connects working people to the resources they need to stay working and avoid financial setbacks.

211 is both a lifeline and a gateway to opportunity, ensuring people receive the right help at the right time.

Beyond 211, we are tackling hunger through the Cuyahoga County Emergency Food Program and the Emergency Food and Shelter Program (EFSP). This year, these programs provided critical support to more than 168,000 households, including nearly 118,000 children.

We are also using data-driven insights to shape solutions. The release of the 2025 Ohio ALICE Report revealed that nearly 40% of Ohio households struggle to cover basic needs. With these insights, we advocated at the local, state, and federal levels for policies like expanding child tax credits, publicly funded childcare, and statewide 211 funding, efforts that directly support working families who so often live one paycheck away from crisis.

Through our grantee partners, more than 40,000 clients accessed safety net services, economic mobility programs, and healthcare resources. Initiatives like the

Siemer Family Stability Initiative, the Lead Safe Cleveland Coalition, and the Tenants' Resources Program are helping families achieve stability and thrive.

We are also innovating for the future. With the success of the Bridges@Work program in Geauga County, we look to expand it into Cuyahoga County to help address barriers to job retention and advancement. Stories like Bobby's in this Annual Report, sharing his journey from living paycheck to paycheck under predatory debt to purchasing his own home, illustrate the life-changing impact of our solutions.

Through it all, our focus remains on building a network of care and opportunity, addressing the social determinants of work, and uniting partners to create lasting solutions.

None of this would be possible without your partnership, volunteerism, and generous support.

We are so grateful for your unwavering commitment to our United Way. Together, we are making a significant impact by tackling problems at their roots and setting new standards to improve lives and create a community where families are financially secure. Because only united can we do this.

With our deepest gratitude,

*Sharon*

**Sharon Sobol Jordan**  
President & CEO

*Vanessa*

**Vanessa Whiting**  
Board Chair





# PROVIDING THE RIGHT HELP AT THE RIGHT TIME

## United Way 211

United Way of Greater Cleveland's 211 helpline is both a lifeline in moments of crisis and a gateway to opportunity. Every day, compassionate 211 professionals answer calls from people struggling to afford food, falling behind on utilities, or fighting to keep a roof over their heads.



### Saved neighbors over \$27.5M dollars on prescriptions through Cuyahoga MedRefer since 2008

At the same time, 211 connects community members with opportunities to gain stability and advance, such as job training, homeownership programs, education, and transportation resources.

### Answered more than 226,000 calls

This year, our free and confidential service connected callers to local experts for food, housing, and utility assistance; prescription cost savings; veterans' support; workforce development; and more. At its core, 211 not only provides the right help at the right time but also links individuals and families to opportunities that foster resilience, stability, and lasting financial security.

See how one call can  
change everything.



“The one call that changed everything for me is the story of a woman who called who needed help with her rent. She didn’t have money to get to a job interview, so we connected her with transportation. A couple of weeks later, she told me she had gotten the job, and she was able to catch up on her rent. That reminds me on a daily basis of the significance of the work we are doing here.”

Michelle Snowden

United Way of Greater Cleveland  
Navigation Service

## 211 CONNECTS RESIDENTS TO ACCURATE, UP-TO-DATE RESOURCES.



Following last summer's storms, which brought five tornadoes, left 400,000 without power, and led to a state of emergency, calls to 211 surged nearly 700%. 211 Navigators not only answered those calls, but also updated nearly 500 resources, coordinated with 80 agencies, and supported the City of Cleveland's 311 line.

Residents sought help finding food, charging stations, Wi-Fi, medical support, and later, resources to replace spoiled goods and access SNAP benefits. By tracking needs in real time and sharing data with officials, 211 helped direct relief to the hardest-hit communities, ensuring pantries and support services met urgent demand.

## Calls to 211 for disaster relief increased by 39%

The August storms proved 211's critical role: adapting quickly, collaborating broadly, and providing trusted information when people need it most.

When the power was restored, many residents' food had perished. Individuals with fixed monthly food budgets, including those on SNAP, had no funds left to replenish their food. By pinpointing neighborhoods with the sharpest rise in food assistance calls, United Way 211 equipped officials with the insight to act quickly. In response, Cuyahoga County Council allocated additional resources to local pantries, ensuring families could recover after the storm.

## Getting the Word Out About United Way 211

Stories shared in this report highlight why spreading the word about United Way 211 is so important. This year, we launched an awareness campaign showcasing 211 as an impactful and trusted service.

The creative concept focused on hope, action, and connection, encouraging neighbors to "Start with 2-1-1" to find the right help at the right time "Anywhere. Anytime." From housing and food to healthcare and employment, striking visuals featuring real Clevelanders reinforced the message that United Way 211 is here for everyone.

The campaign reached Greater Clevelanders through multiple channels. Nearly 1,000 posters were placed by volunteers and staff in libraries, police stations, food banks, churches, schools, and health centers; billboards stood tall in Kamm's Corner, East Cleveland, and Central Cleveland; social media garnered more than 600 engagements;

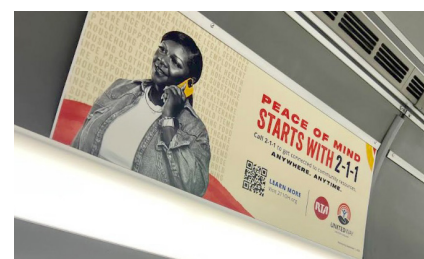
targeted email marketing expanded our messaging reach; and a non-skippable commercial on TUBI delivered over 30,000 impressions.

In partnership with RTA, we also placed interior car cards in 311 buses and rail cars. And with the 3-Team Alliance, the United Way 211 spot appeared on the Cavaliers' Humungotron and the Browns' stadium Matrix Board.



Scan the QR code to see the creative in action

By expanding awareness across both traditional and digital platforms, the campaign elevated 211 as an essential community helpline, while reinforcing United Way's role as innovative, responsive, and trusted.



## Connecting families to the critical resources that open doors to support and opportunity

United Way of Greater Cleveland administers the Cuyahoga County Emergency Food Program, funded by Health and Human Services Levy, in partnership with the Greater Cleveland Food Bank and Hunger Network. This program provides critical support to food pantries across the county, supplying protein and dairy such as meat, poultry, eggs, milk, along with fresh fruits and vegetables, and whole grains. When households lose food during emergencies like power outages, this program helps them restock.

## Over 168,000 households, which included 118,000 children, received vital food assistance.

In addition, United Way administers the Emergency Food and Shelter Program (EFSP) in Cuyahoga and Geauga counties, funded by the Federal Emergency Management Agency. Our EFSP Advisory Board brings together consumers, advocates, and social service providers to guide resources where they are needed most.





# BUILDING INNOVATIVE SOLUTIONS WITH OUR UNIQUE INSIGHTS



Our region is growing. With a \$266 billion economy, Greater Cleveland is one of the top 20 economic regions in the nation. But for many families, progress hasn't arrived at their front door. Almost half of the families in Greater Cleveland live paycheck to paycheck, many of them employed but yet still struggling to make ends meet.

## The cost of living rises. Wages lag behind. Racial and economic gaps persist.

Every call that comes into United Way's 211 helpline provides insight into people's needs, the resources that are effective, and the gaps that still exist. These unique insights, along with the data from United Way's Asset Limited, Income Constrained, Employed (ALICE) report allow us to guide investments and create programs that are grounded in the lived reality of our community.

## Asset Limited, Income Constrained, Employed (ALICE)

United Way of Greater Cleveland, alongside United Ways across Ohio, released the 2025 Ohio ALICE (Asset Limited, Income Constrained, Employed) Report in May 2025. The report highlights the struggles of households earning above the Federal Poverty Level but below the cost of living. ALICE data reveal the true financial picture, showing how wages, rising costs, and policies affect working families across every county in Ohio.

United Way continues to use ALICE data to educate legislators, nonprofits, philanthropy, and businesses about the urgent needs of ALICE households. Since May 2025, United Way has briefed over 400 stakeholders through sessions across the state and generated coverage in outlets including Ideastream, The Plain Dealer/ cleveland.com, Cleveland Jewish News, Spectrum, and WEWS.

## Key Findings

- 39% of Ohio households struggle to cover basic needs like food, housing, childcare, healthcare, and transportation.
- It costs \$65,000–\$79,000 annually to support a family of four in Ohio, depending on childcare needs.
- ALICE rates are similar across urban (38%) and rural (40%) communities.

### In Cuyahoga and Geauga Counties, ALICE households far exceed those in poverty.

- Cuyahoga: 16% in poverty vs. 27% ALICE
- Geauga: 6% in poverty vs. 22% ALICE
- Cost to support a family of four: \$73,000–\$90,000
- Yet, two full-time workers in common industries earn just \$55,000, nearly \$20,000 short.

### To support ALICE families, United Way advocated for four FY26–27 state budget priorities:

- A \$1,000 state-level Child Tax Credit
- Expanded eligibility for Publicly Funded Childcare
- Statewide funding for Ohio 211
- Support for the Siemer Family Institute's Family Stability programs



Learn how SDoW  
shape Jess's story.



## Social Determinants of Work

The Social Determinants of Work (SDoW) are the conditions that shape a person's ability to find, keep, and excel in a job, including access to affordable childcare, safe and reliable transportation, stable housing, healthcare, digital connectivity, education and training, legal support, and job flexibility.

When these supports are absent, even the most motivated individuals face barriers to sustaining employment and advancing. United Way of Greater Cleveland is working to address these challenges by connecting families to critical resources, partnering with employers to strengthen workplace supports, and advocating for policies that remove barriers to economic mobility. By focusing on the social determinants of work, United Way helps ensure that every individual has a fair opportunity to succeed in the workforce and build lasting stability.



See how the Benefits  
Cliff impacts families.



**UNITED WAY OF GREATER  
CLEVELAND JOINED  
LIVEUNITEDCHICAGO AND  
FUTURE FORWARD INSTITUTE  
AT THE WIN-WIN WORKPLACE  
SUMMIT IN CHICAGO IN MAY  
TO DISCUSS PLACE-BASED  
WORKFORCE STRATEGIES.**

United Way of Greater Cleveland's educational videos on the Social Determinants of Work and the Benefits Cliff premiered before a national audience of business leaders and innovators committed to addressing real challenges and transforming workplace practices.



# WORKING TOGETHER TO SUPPORT ECONOMIC MOBILITY FOR ALL

We work hand-in-hand with partners to create lasting solutions that strengthen our community and change lives.

Since 2020, the Lead Safe Cleveland Coalition has distributed two-thirds of the philanthropic dollars raised and funded more than 6,200 grants, loans, and incentives to help clean up homes in the city. Encouragingly, new public health data show that this work is beginning to make a measurable difference. Recent reports confirm that childhood lead-poisoning rates in Cleveland are finally declining after years of stagnation—a clear sign that the combined efforts of the Coalition and the City are producing lasting impact.

We established the Tenants' Resources Program in partnership with Cleveland Mediation Center, Fifth Christian Church, The Legal Aid Society of Cleveland, Smart Development, and Morelands Group to promote safe and stable housing. The program educates tenants on their rights and fair housing laws, and offers access to legal and mediation services.

We also continue to incubate bold ideas like Universal Basic Employment (UBE) to advance policies that tackle poverty at its root rather than its symptoms. UBE is a jobs guarantee pilot designed to show that a jobs guarantee can eliminate poverty and reduce its costly consequences. With United Way's support, UBE will unite research, pilot participants, business partners, and support systems to demonstrate the positive impact of a sustainable earned income. The pilot is expected to launch in 2026.

## WE ARE BUILDING A NETWORK OF CARE AND OPPORTUNITY FOR EVERY NEIGHBOR.

## Bridges@Work

United Way's Bridges@Work, offered in partnership with Catholic Charities and the Hebrew Free Loan Association (HFLA) of Northeast Ohio, places an on-site Resource Coordinator at partner workplaces to provide confidential, one-on-one support with challenges that affect job retention and advancement, such as childcare, eldercare, housing, transportation, and mental health.

A key benefit to employees is access to zero-interest, small-dollar loans for unexpected expenses like car repairs or medical bills, paired with financial counseling to build credit and avoid predatory debt. Building on the success of Bridges@Work at six employers in Geauga County, United Way is now expanding the program into Cuyahoga County to help even more people achieve lasting economic mobility.



## Bobby's Story

Every morning, Bobby drives 20 minutes to Montville Plastics, where he works as a setup supervisor. He makes it a point to arrive an hour early, making sure his team has everything they need to do their jobs. His co-workers see a dependable leader, but Bobby's journey here wasn't easy.

Not long ago, he was trapped in a cycle of debt with predatory lenders. Living in a basement, he borrowed from one lender just to pay another, until his full-time paycheck left him with only \$12 to \$15 in hand.

**"Before you know it, you can't pay anybody," he recalls.**

Then Bobby connected with United Way's Bridges@Work program. With the support of an on-site Resource Coordinator, Bobby accessed a zero-interest emergency loan that helped him pay off a predatory lender. From there, he used a snowball strategy to tackle the rest of his debt, built a budget, and set a goal. His goal was to have a place of his own.

Within five years, he was able to purchase his own home. Today, he manages his finances with confidence, has savings, and even enjoys the freedom of extra pocket money, sometimes spending it on his favorite pastime, playing pool, even competing in national tournaments.

"It's very comforting that I have my own place," Bobby says with pride. "It's not the Taj Mahal, but I've got a plan, and I'm stable enough that when it's time to retire, I'll still be able to do what I want to do."

### Watch Bobby's Story





# Public Policy

At United Way of Greater Cleveland, we invest in people's capacity not just to get by, but to get ahead.

Our advocacy spans local, state, and federal levels, powered by ALICE and 211 data. We partner with government, business, nonprofit, and community leaders to advance solutions such as addressing benefits cliffs, enhancing 211, and promoting income generation and wealth building.



## Highlights of our FY25 advocacy work include:

### State

Led a coalition of 211 operators and United Ways to advocate for \$2M in annual state funding for Ohio 211, meeting with more than 70 legislators and testifying before the Ohio Senate Health Committee.

### Federal

Engaged the White House, Ohio Delegation, and congressional staff on benefits cliff legislation, the Child Tax Credit, and the \$250M HELP Act to strengthen 211 nationwide.

### Local

Shared ALICE and 211 insights with officials from the city of Cleveland and Cuyahoga and Geauga counties, shaping discussions on health and human services.

### Executive Engagement

Worked with administrators across all levels of government to assist with ensuring individuals maintain health and food assistance as changes to Medicaid and SNAP roll out.

### Community Conversations

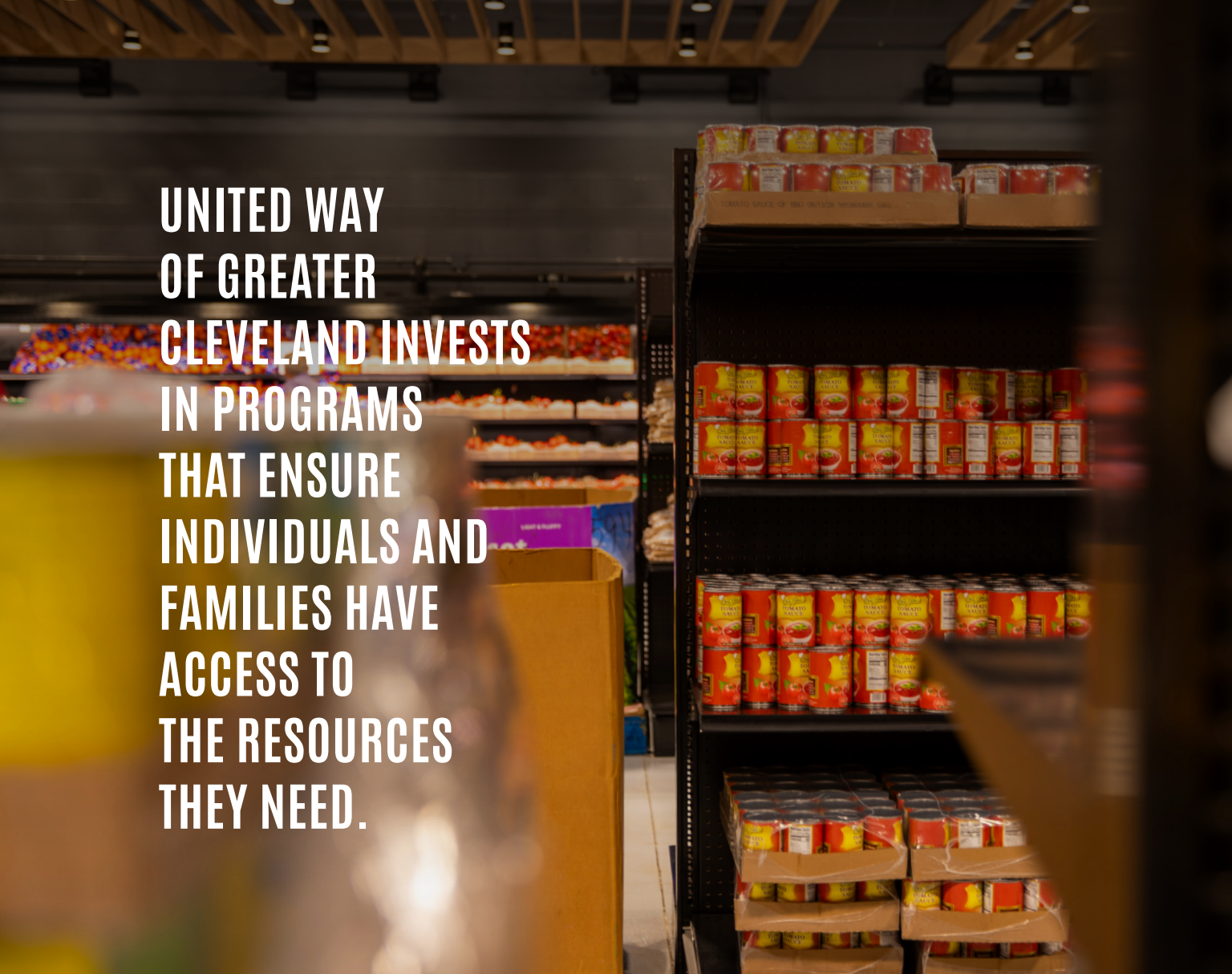
Hosted virtual sessions with 400+ participants on benefits cliffs and the Child Tax Credit, culminating in the Ohio United Way ALICE Policy Summit at the Statehouse.

The event brought together over 200 business leaders, policymakers, United Way colleagues, and partners to share strategies that address barriers to economic mobility.

Highlights included remarks by Governor Mike DeWine, who underscored the urgency of reducing benefits cliffs, and Board Chair Vanessa Whiting, who discussed how employer supports, such as car-repair assistance, flexible scheduling, and transportation stipends, can work alongside state policy.

Through this work, United Way of Greater Cleveland ensures that data-driven insights and community voices shape the policies and systems that help families achieve stability and lasting financial security.

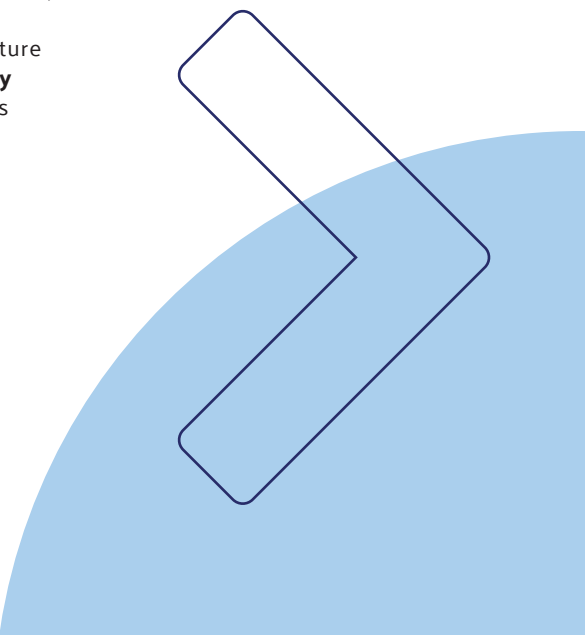




UNITED WAY  
OF GREATER  
CLEVELAND INVESTS  
IN PROGRAMS  
THAT ENSURE  
INDIVIDUALS AND  
FAMILIES HAVE  
ACCESS TO  
THE RESOURCES  
THEY NEED.

United Way of Greater Cleveland drives impact through interconnected focus areas that help individuals and families build stability and long-term success. **Safety Net Efficiency** helps families remain stable during crises by providing a reliable support system that connects them to essential resources like food, housing, and flexible funds. **Workforce Development** equips people with the training, support,

and opportunities needed to secure and advance in meaningful careers. **Resources for Working Parents** supports children and caregivers through early education, family-centered services, and trauma-informed care that nurture resilience and growth. **Mobility & Assets** expand opportunities for residents to get ahead by supporting homeownership, building financial assets, and ensuring long-term stability.



Agency	Program
Safety Net Efficiency	Hunger Network of Greater Cleveland Food Rescue Program Technical Innovation
	Lutheran Metropolitan Ministry Flexible Funds for Permanent Housing
	Catholic Charities Corporation (Geauga County) Food Insecurity Initiative
	Family & Community Services, Inc. Gauga Housing Collaborative
	Ravenwood Mental Health Center Gauga Poverty Collaborative
	Cleveland Rape Crisis Center Trauma-Informed Access to Care
	Food Strong Farm-to-School Expansion Project with CMSD
Workforce Development	ASIA (Asian Services in Action) Ready for Next Workforce for Multicultural Communities
	New Bridge Cleveland Earn & Learn Adult Workforce Programs
	Passages Inc. Cuyahoga County Services to Parents and Families
	Spanish American Committee Families First: Culturally Relevant Food Access and Wraparound Support
	Towards Employment Industry-driven Career Pathway Services
Resources for Working Parents	Black Child Development Institute BCDI Ohio's Northeast Early Childhood Service Hub
	Lexington-Bell Community Center Bridge to Two: Early Childhood Development and Family Support
	Milestones Autism Resources Early Intervention: Equity in Autism Diagnosis through Community Partnerships and Collaboration
	YWCA Greater Cleveland Two-Gen Trauma-informed Early Learning for Homeless Children
Mobility & Assets	Enterprise Community Partners Make It Home Cleveland: Path to Homeownership
	Legal Aid Society of Cleveland Economic Mobility, Justice, and Wealth Building through Legal Aid

Across our partnerships and community investments, United Way is creating conditions for economic stability and mobility.

- Delivered more than **140,000 rescued meals** to more than **700 people**.
- Empowered over **44,000 people** with economic mobility programs that provide immediate relief, loan assistance, and pathways to financial stability through literacy, job training, placement, and employer-based benefits.
- Connected **23,000 people** with health resources including food assistance, nutrition education, trauma-informed care, affordable medical services, and low-cost medications.
- Helped **800 families** stabilize their housing through financial assistance to prevent eviction or foreclosure, access to legal representation, and support for safer homes.



RESOURCE DEVELOPMENT



Red Feather Society

Red Feather Society as a whole raised \$2,916,209 from 29 donors

- Visionary raised \$1,759,496 from 10 donors
- Luminary raised \$1,156,713 from 19 donors

United Way of Greater Cleveland takes pride in the Red Feather Society, recognizing our most generous donors who annually give \$50,000 or more. In 1945, the red feather was chosen as the national symbol for Community Chests, a forerunner of the modern United Way. Red feather pins were awarded to donors and worn proudly as a sign of a commitment to their community. The Red Feather

Society was named in honor of our humble beginnings and to recognize our dedicated supporters.

Last year, 29 Red Feather Society members raised more than \$2.9 million for our annual campaign. Thank you to these remarkable leaders for their foundational support.

Red Feather Visionary (\$100,000+) Recognition Names  
1 Anonymous Donor

Mr. Craig Arnold	The Helen D. Newcomb Fund
Walter C. and Lucy I. Astrup Fund	Mr. and Mrs. William R. Oatey
Alexander and Sarah Cutler	Jane and Jon Outcalt
The Jack, Joseph and Morton Mandel Foundation	The Maude S. Tomlin Memorial Fund
David and Inez Myers Foundation, a supporting foundation of the Jewish Federation of Cleveland	

Red Feather Luminary (\$50,000 - \$99,999) Recognition Names  
2 Anonymous Donors

Kimberly and Robert J. Bentley II	Mr. Roy Minoff
The Eva L. and Joseph M. Bruening Foundation	John P. Murphy Foundation
Viki and Marc Byrnes	Albert and Audrey Ratner
Brian and Fiona Chambers	Susan and James Ratner
Mark and Terry Chapin	Nancy and Paul Wellener
Patricia and John Chapman	Ms. Vanessa L. Whiting
Mr. and Mrs. Paul J. Dolan	The Wuliger Family
Mr. and Mrs. Christopher M. Gorman	
Richard Horvitz and Erica Hartman-Horvitz Foundation	
The Lerner Foundation	



Philanthropist Society

Philanthropist Society as a whole raised \$2,683,740 from 170 donors

- Innovator raised \$969,344 from 32 donors
- Steward raised \$658,113 from 39 donors
- Guardian raised \$1,056,283 from 99 donors

The Philanthropist Society celebrates our donors who annually give \$10,000 or more. Originating in the 1970s, this group was the founding giving society at United Way of Greater Cleveland, established with the fundamental belief that a better future is possible for all Greater Clevelanders.

Last year, 170 Philanthropist Society members raised \$2.6 million in support of our annual campaign. Thank you to these outstanding partners for their dedication to United Way of Greater Cleveland and our community.

Philanthropist (\$25,000 - \$49,999) – Innovators  
6 Anonymous Donors

The Thomas and Joann Adler Family Foundation	Heath Monesmith
Victor and Abby Alexander	Ray and Katie Murphy
Mr. Stephen P. Anway	Janet E. Neary
Dudley S. Blossom Estate	Mrs. Patricia Nock
Julie Boland and John Gannon	Randy and Amy Paine
Caroline and Joseph Buccilli and Family	Patrick and Julie Pastore
Susan and Michael Cristal	Laura Paszt
Yawen Deng	The Robert S. and Sylvia K. Reitman Family Foundation
Calvin and Sherry Griffith	Mr. Monte C. Repasky
Sheldon and Susan Karp	Paulo Ruiz Sternadt
John and Angela Mago	Betty T. and David M. Schneider Foundation
The Meisel & Pesses Family Foundation	The Nellie B. Snively Fund
Robert and Lynn Miller	Mr. Michael N. Ungar and Ms. Deborah P. Warner

List continued on the next page



# RESOURCE DEVELOPMENT



**Philanthropist (\$15,000 - \$24,999) – Steward**  
**3 Anonymous Donors**

Amy and Stan* Brady	Oliver Memorial Fund
James R. and Mary S. Bright	Joe and Meredith Manning
Gail and Bill Calfee	Nancy and John McMillan
Ms. Amy K. Carlson and Mr. Eric J. Carlson	Beth E. Mooney
The Doty Family	Bill and Lynn Murphy
Mary Kim Elkins and Dave Greenspan	Doug and Denise Neary
Frances B. and George W. Ford Memorial Fund	Jon and Robin Outcalt
Bob* and Ann Gillespie	Kirsten and Alex Park
Jerome Grisko	Richard W. and Patricia R.* Pogue
Mr. and Mrs. David H. Gunning	Robert H. Rawson, Jr.
Tiffany Hanisch	Joseph Rodgers
Mr. David G. Heiman	Barbara and Alan Rosskamm
Rebecca and David Heller	Rachel Marie Simons
Tom and Lisa Hunt	Frank C. Sullivan
Mr. Yan Jin	Joe D. Sweeney
Olivier Leonetti	Terry Szmagala, Jr. and Helen Jarem
Tracy and David Lindberg	Mr. Nathan F. Ware
The John G. and Mary Lockwood	David and Karen Yankovitz
	* Deceased

**Philanthropist Guardian (\$10,000 - \$14,999)**  
**5 Anonymous Donors**

Mr. and Mrs. Brian Akers	The George W. Codrington Charitable Foundation
Jeffrey and Debra Appelbaum	Michele Connell
Mrs. Edward F. Bell	David and Danielle Cook
Edward J. and Denise D. Bell	Tamieka Davis
Cipriano and Gina Beredo	Jerry and Donna Doyle
Mr. and Mrs. James H. Berick	Mark and Marilyn Eisele
Dennis and Madeline Block	Mr. Gregg A. Eisenberg
Kip T. Bollin	The Irving and Gloria Fine Foundation
Rogério Branco	Susan and Patrick Flaherty
Jeanette G.* and Glenn R.* Brown	Mr. Matthew W. Fordenwalt
Mr. Richard J. Buoncore	
Rick and Sheila Chiricosta	

**Philanthropist Guardian (\$10,000 - \$14,999)**  
**5 Anonymous Donors Continued**

Beth and Bill Forsythe	John Kramer	Dennis and Marcy Schwartz
The Harry K. Fox and Emma R. Fox Charitable Foundation	Keith J. Libman	Boake and Marian Sells
Earl and Barbara Franklin	Stephanie Liddy	Ms. Jennifer L. Shea
Mr. and Mrs. Craig Glazier	Mr. Norman L. Lobins	Ms. Amy Smart
Mr. and Mrs. Craig and Wendy Gutridge	Thomas and Mary Lucchesi	Mr. James C. Spira
James and Angela Hambrick Foundation (Geauga County Donor)	Mr. and Mrs. Alex and Carol Machaskee	Mary Ann Stropkay
The Hankins Foundation	Mark and Mary Madeja	The William and Pamela Summers Family
Chuck and Kathie Hardin	Joe and Nathan Matuszewski	Lisa Sutton
Mr. and Mrs. Daniel M. Haymond	Douglas McGregor	Mr. and Mrs. Kenneth E. Taylor
Mr. Daniel R. Heberle	The McGregor Foundation	Mr. and Mrs. Joseph H. Thomas
The Higley Fund	Sean and Julie Miller	Karen and Mitch Thompson
Amy and Stephen Hoffman	Mr. Hiroshi Miyoshi	Curtis and Marisa Tuggle
Thomas and Marsha Hopkins	Carrie Moore	Bob and Kristin Tull
Mr. and Mrs. Christopher W. Horsburgh	The Murch Foundation	Tom Turco
Maura L. Hughes and Robert T. Moll	Mr. Mario A. Pena	Mr. Michael A. VanNiel
Peter and Heather Izanec	Mr. and Mrs. Frank H. Porter, Jr.	Liz Voskuhl
Harold V. Jones	Sarah K. Rathke	Daniel and Molly Walsh
Sharon Sobol Jordan and David Wallace	Deborah Read	Robert and Victoria Ware
James D. Kacic	James and Donna Reid	David Wells
Ira and Amy Kaplan	Mr. Stephen M. Rice	Mr. Thomas M. Welsh
Sanjiv and Anju Kapur	Brian and Christina Richardson	Danielle and Jeffrey Wild
Stewart Kohl	Mr. and Mrs. Thomas A. Richlovsky	Wolf Family Foundation, a supporting foundation of the Jewish Federation of Cleveland
Dean and Judy Kontul	John Rodgers	Jill and Jeffrey Zimon
	Enid and David Rosenberg	* Deceased
	Dr. Fred* and Jackie Rothstein	
	Gail C. and Elliott L. Schlang	



# 2024-25 Top Workplace Campaigns

United Way of Greater  
Cleveland thanks the  
**441 companies**

that participated in the 2024-  
2025 campaign. By hosting a  
workplace giving campaign,  
these corporate partners  
helped to strengthen our  
collective impact and create  
lasting change so Northeast  
Ohio is a region where anyone  
can achieve lasting financial  
security. Together, these  
corporate partners raised

**\$11,099,436.**

## United Way offers a special *thank you* to the Top 50 Workplace Campaigns:

Eaton	Oswald Companies
KeyBank	Heinen's
Cleveland Clinic	Cleveland Guardians
EY	Cleveland Metropolitan School District
PNC	Cleveland Cavaliers
Deloitte	Synthomer
Rockwell Automation	AES Management Corp
Jones Day	Northern Haserot
RPM International	Carnegie Companies
KPMG	MAI Capital Management
Thompson Hine	Costco Wholesale
Squire Patton Boggs (US)	Cuyahoga Community College
The Federal Reserve Bank of Cleveland	Ohio CAT
Medical Mutual	General Motors
University Hospitals	Riverside Company
BakerHostetler	Northeast Ohio Regional Sewer District
Calfee	CBIZ
The Illuminating Company	City of Cleveland
Fifth Third Bank	PPG Industries
Covia	The NRP Group
Benesch, Friedlander, Coplan & Aronoff	UB Greensfelder
Cleveland-Cliffs	AAA East Central/OMA Region
Hahn Loeser	Tremco
Giant Eagle	Avient
Applied Industrial Technologies	CFNA

# UNITED IS THE WAY

United is the way to  
build a region where  
everyone can achieve  
lasting financial security.



### Making a Gift

There are many ways to  
join in and make an impact:  
through monthly giving, online  
donations, matching gifts,  
contributions from an IRA or  
planned gift, or by becoming  
part of one of our giving  
societies. Your support proves  
that united is the way to  
transform lives and strengthen  
our community.



### Workplace Campaigns

Hosting a Workplace  
Campaign in support of  
United Way of Greater  
Cleveland allows companies  
to have a positive impact in  
the community by engaging  
employees through donations,  
volunteerism, and much more.



### Corporate Sponsorships

Corporate sponsorships  
allow United Way of Greater  
Cleveland to facilitate  
events and initiatives while  
showcasing the meaningful  
solutions provided to our  
community.



### Emerging Leaders

United Way of Greater  
Cleveland's Emerging Leaders  
is an affinity group for young  
professionals. Join more than  
2,000 up-and-coming leaders  
for events and activities  
that facilitate fundraising,  
volunteerism, networking, and  
professional development.



### United Way Volunteer Portal

United Way of Greater  
Cleveland's Volunteer Portal,  
powered by BVU, curates  
volunteer opportunities in an  
online hub, allowing people  
to quickly browse, search  
and register for impactful  
volunteer opportunities across  
Greater Cleveland.



# 2024 - 2025

## Our Work by the Numbers

United Way of Greater Cleveland believes that every individual should have the opportunity to build a secure and fulfilling life. This belief is advanced in partnership with residents, donors, corporations, foundations, and government agencies who come together to launch and scale solutions that expand economic opportunity and mobility.

On average, more than 85 percent of operational funds are invested directly into community initiatives that provide timely support and strengthen financial stability across our region. This united approach reflects our shared commitment to advancing lasting solutions for Greater Cleveland.

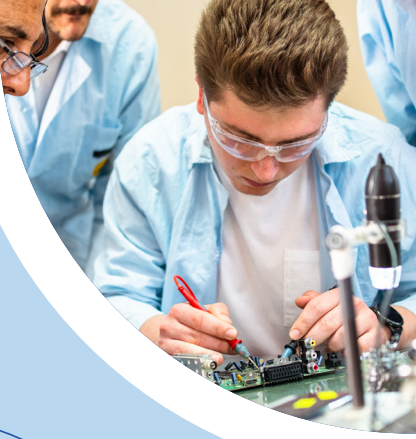
*These preliminary figures are subject to audit and represent fiscal year 2025 from July 1, 2024, through June 30, 2025.*

*In addition to the information shared here, full financial reports and audit reports are available at [unitedwaycleveland.org](https://unitedwaycleveland.org).*



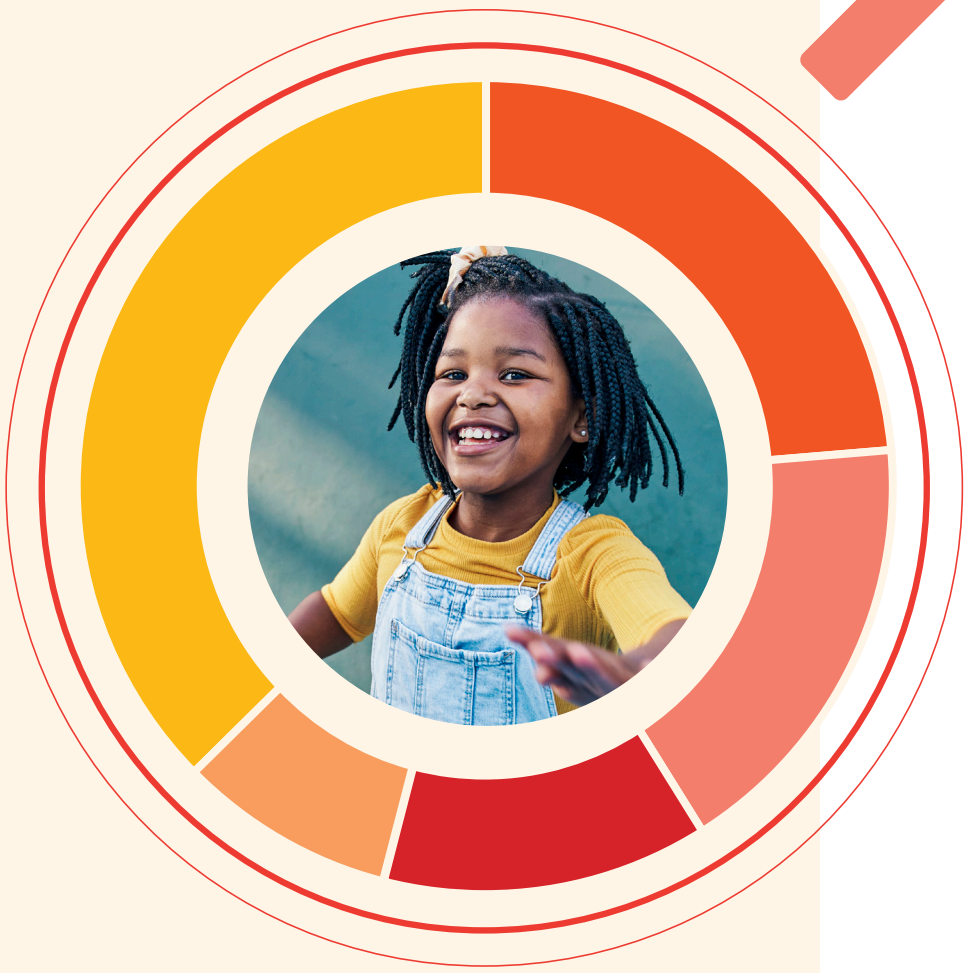
**Total Contributions**  
**\$21.9M**

- Campaign Contributions  
**\$13.8M**
- Designated Contributions  
**\$4M**
- Direct Program Resources  
**\$2.7M**
- Investment Activity  
**\$1.4M**



**\$16.8M** + **\$7.3M**  
Direct Investments Managed Resources

**\$24.1M**  
Total Community Investment



**Total Expenditures**  
**\$21.9M**

United Way 211 and other direct services to the community  
**\$7.9M**

Investment in community agencies  
**\$5M**

Donor designated investment in community agencies  
**\$4M**

Management & General  
**\$2.7M**

Community Awareness  
**\$2.3M**

**Managed Resources \$7.3M**  
United Way of Greater Cleveland frequently acts as a financial manager or administrator for other non-profit organizations and public entities. These dollars are typically secured by United Way of Greater Cleveland and invested directly back into the community to address the root cause issues of poverty.



2025-2026 BOARD OF DIRECTORS

<b>Leadership</b> <b>Vanessa L. Whiting, Esq.</b> Chair	<b>Jerome P. Grisko Jr.</b> Co-Chair, Community Impact Committee	<b>Kip T. Bollin</b> Chair, Resource Development Committee
<b>Paul J. Dolan</b> Immediate Past Chair	<b>Enid B. Rosenberg</b> Chair, Governance and Nominating Committee	<b>Keith J. Libman</b> Chair, Investment Sub-Committee
<b>Ira C. Kaplan</b> Chair Elect	<b>Cipriano S. Beredo III</b> Co-Chair, Governance and Nominating Committee	<b>David C. Fulton Jr.</b> Co-Chair, Investment Sub-Committee
<b>James A. Ratner</b> Vice Chair	<b>Jeffrey D. Zimon</b> Chair, Human Resources Committee	<b>Edward J. Bell</b> Chair, Planned Giving Sub-Committee
<b>Andrew J. “Randy” Paine III</b> Vice Chair	<b>Kevin Martin</b> Chair, Marketing and Brand Strategy Committee	<b>Sharon Sobol Jordan</b> President & Chief Executive Officer
<b>Susan D. Krantz</b> Treasurer and Chair, Finance Committee	<b>Taras G. Szmagala Jr.</b> Chair, Public Policy and Advocacy Committee	
<b>Sonali B. Wilson, Esq.</b> Secretary	<b>India L. Birdsong Terry</b> Co-Chair, Public Policy and Advocacy Committee	
<b>Kim Meisel Pesses</b> Chair, Community Impact Committee		

<b>Chris Adams</b> <b>Harriet Applegate</b> <b>Dr. Michael A. Baston</b> <b>Hon. Justin M. Bibb</b> <b>Emily Campbell</b> <b>Fiona Chambers</b> <b>Jenice Contreras</b> <b>Colleen Cotter</b> <b>Miranda Creel</b> <b>Lucy Clark Dougherty</b> <b>Bill Fagan</b> <b>Dee Bagwell Haslam</b> <b>Stephen Hoffman</b> <b>Erik Janas</b> <b>Steffany Larkins</b> <b>Cecil J. Lipscomb</b> <b>Melissa Maki</b> <b>Mark S. Meder</b> <b>Calder Mellino</b> <b>Tomislav Mihaljevic, MD</b> <b>Dr. Warren Morgan</b> <b>Jim Mullen</b>	<b>Shari Obrenski</b> <b>Ken Outcalt</b> <b>Jeffery K. Patterson</b> <b>Brian Pearson</b> <b>Ryan M. Puente</b> <b>Monte Repasky</b> <b>Brian J. Richardson</b> <b>Erika Rudin-Luria</b> <b>Paulo Ruiz</b> <b>George A. Sample</b> <b>Jasmin Santana</b> <b>Felton Thomas Jr.</b> <b>Daniel P. Walsh Jr.</b> <b>Lorna Wisham</b>  <b>Life Directors</b> <b>Thomas W. Adler</b> <b>Richard J. Buoncore</b> <b>Marc S. Byrnes</b> <b>Paul Clark</b> <b>Alexander M. “Sandy” Cutler</b>	<b>Terrance C.Z. Egger</b> <b>Robert W. Gillespie Jr.*</b> <b>Henry J. Goodman*</b> <b>Alex Machaskee</b> <b>Morton L. Mandel*</b> <b>Henry L. Meyer III*</b> <b>Sandra Pianalto</b> <b>Richard W. Pogue, Esq.</b> <b>Robert S. Reitman</b> <b>William R. Robertson</b> <b>Cheryle A. Wills-Matthews*</b>  <b>Directors Emeriti</b> <b>William E. Butler</b> <b>Julien L. McCall*</b>  <i>* Deceased</i>
--	--	--

2024-2025 BOARD OF DIRECTORS

<b>Leadership</b> <b>Vanessa L. Whiting, Esq.</b> Chair	<b>Cipriano S. Beredo III</b> Co-Chair, Governance and Nominating Committee	<b>Kevin Clayton</b> Co-Chair, Strategic Planning Committee
<b>Paul J. Dolan</b> Immediate Past Chair	<b>Jeffrey D. Zimon</b> Chair, Human Resources Committee	<b>J. David Heller</b> Co-Chair, Strategic Planning Committee
<b>James A. Ratner</b> Vice Chair	<b>Chris Adams</b> Chair, Marketing and Brand Strategy Committee	<b>Ira C. Kaplan</b> Co-Chair, Strategic Planning Committee
<b>Andrew J. “Randy” Paine III</b> Treasurer and Chair, Finance Committee	<b>Kevin Martin</b> Co-Chair, Marketing and Brand Strategy Committee	<b>Keith J. Libman</b> Chair, Investment Sub-Committee
<b>Sonali B. Wilson, Esq.</b> Secretary	<b>Taras G. Szmagala Jr.</b> Chair, Public Policy and Advocacy Committee	<b>David C. Fulton Jr.</b> Co-Chair, Investment Sub-Committee
<b>Kim Meisel Pesses</b> Chair, Community Impact Committee	<b>India L. Birdsong Terry</b> Co-Chair, Public Policy and Advocacy Committee	<b>Edward J. Bell</b> Chair, Planned Giving Sub-Committee
<b>Jerome P. Grisko Jr.</b> Co-Chair, Community Impact Committee	<b>Monte Repasky</b> Chair, Resource Development Committee	<b>Sharon Sobol Jordan</b> President & Chief Executive Officer
<b>Susan D. Krantz</b> Co-Chair, Finance Committee	<b>Kip T. Bollin</b> Co-Chair, Resource Development Committee	
<b>Enid B. Rosenberg</b> Chair, Governance and Nominating Committee		

<b>Harriet Applegate</b> <b>Craig Arnold</b> <b>Dr. Michael A. Baston</b> <b>Hon. Justin M. Bibb</b> <b>Maynard A. “Mike” Buck</b> <b>Emily Campbell</b> <b>Fiona Chambers</b> <b>Nabil Chehade, MD</b> <b>Jenice Contreras</b> <b>Colleen Cotter</b> <b>Miranda Creel</b> <b>Patrick Gareau</b> <b>Bill Fagan</b> <b>Dee Bagwell Haslam</b>	<b>Elizabeth M. Hjar</b> <b>Stephen Hoffman</b> <b>Erik Janas</b> <b>Joy D. Johnson</b> <b>J. Nick Kompare</b> <b>Steffany Larkins</b> <b>Cecil J. Lipscomb</b> <b>Melissa Maki</b> <b>Mark S. Meder</b> <b>Calder Mellino</b> <b>Tomislav Mihaljevic, MD</b> <b>Dr. Warren Morgan</b> <b>Jim Mullen</b>	<b>Shari Obrenski</b> <b>Jeffery K. Patterson</b> <b>Brian Pearson</b> <b>Ryan M. Puente</b> <b>Brian J. Richardson</b> <b>Erika Rudin-Luria</b> <b>Victor Ruiz</b> <b>George A. Sample</b> <b>Jasmin Santana</b> <b>Felton Thomas Jr.</b> <b>Daniel P. Walsh Jr.</b> <b>Paul L. Wellener IV</b> <b>Lorna Wisham</b>
---	--	--

United Way of Greater Cleveland Leadership Staff

<b>Sharon Sobol Jordan</b> President & Chief Executive Officer	<b>Jenn Kons</b> Vice President, Community Impact	<b>Maryam Kiefer</b> Senior Director, Public Policy & Advocacy
<b>Mike Beedles</b> Chief Financial Officer	<b>Michael Brown</b> Senior Director, Human Resources	<b>Margaret Koehler</b> Senior Director, Executive Administration
<b>Ken Surratt</b> Chief Revenue Officer	<b>Ruth Dobranic</b> Senior Director, Finance	
<b>Brian Heath</b> Chief Analytics Officer	<b>Charles Ellsworth</b> Senior Director, Information Technology	
<b>Toi Comer</b> Vice President, Resource Development	<b>Jane Furth</b> Senior Director, Principal & Leadership Giving	





Our vision is to create a region where anyone—no matter their zip code, race, or starting point—can achieve lasting financial security.

**One person can inspire change. But real change? That takes all of us.**

# UNITED IS THE WAY





**UNITED WAY**  
Greater Cleveland

## Follow us on Social Media

@UnitedWayCLE   

We maintain an active presence on Facebook, LinkedIn, and Instagram. Be sure to follow us on your preferred social media channel to stay engaged with our work in the community.

## Stay Informed



Sign up for our monthly newsletter to stay informed about our latest updates and events.

[unitedwaycleveland.org](https://unitedwaycleveland.org)

uwgc2025annualreport\_121125